

ISO 9001 by L.R.
PED DIR. 2014/68/UE by L.R.
ATEX DIR. 2014/34/UE by B.V.
FIRE SAFE EXECUTION BS6755/API 607 by L.R.
FIRE SAFE TESTED ISO 10497 by L.R.
ISO 15848 by TÜV
ANTISTATIC DEVICE by L.R.
EAC CERTIFICATION by B.V.

TYPE
FP3
PN 20 ÷ 100

NORME E DIRETTIVE APPLICATE DISPONIBILI AL SEGUENTE LINK:
STANDARD AND DIRECTIVE APPLIED AVAILABLE AT FOLLOWING LINK:
http://www.adlerspa.com/pdf/NORME_ADLER.pdf

VALVOLE A SFERA "3 PEZZI" PASSAGGIO TOTALE EN 10226-1 (EX ISO 7-1 Rp) – ANSI B1.20.1 NPT – S.W. – B.W.



On request
TPED 2010/35/UE
FROM ND 1/2" TO ND 2"
PN 40

ACTUATED
BALL VALVES
CERTIFIED
SIL 3 Capable
According to IEC 61508

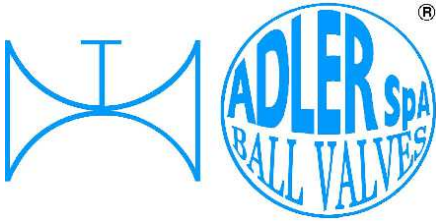
FULL BORE ACCORDING TO
ISO 14313 – ISO 17292

CONSTRUCTION ACCORDING TO:
BS EN 12516-2 - DIN 3202 M3
ISO 14313

**BALL VALVES "3 PIECE" FULL BORE
ROBINETS A BOISSEAU SPHERIQUE
"3 PIECES" PASSAGE INTEGRAL**

**KUGELHÄHNE "3 TEILIG"
VOLLER DURCHGANG**

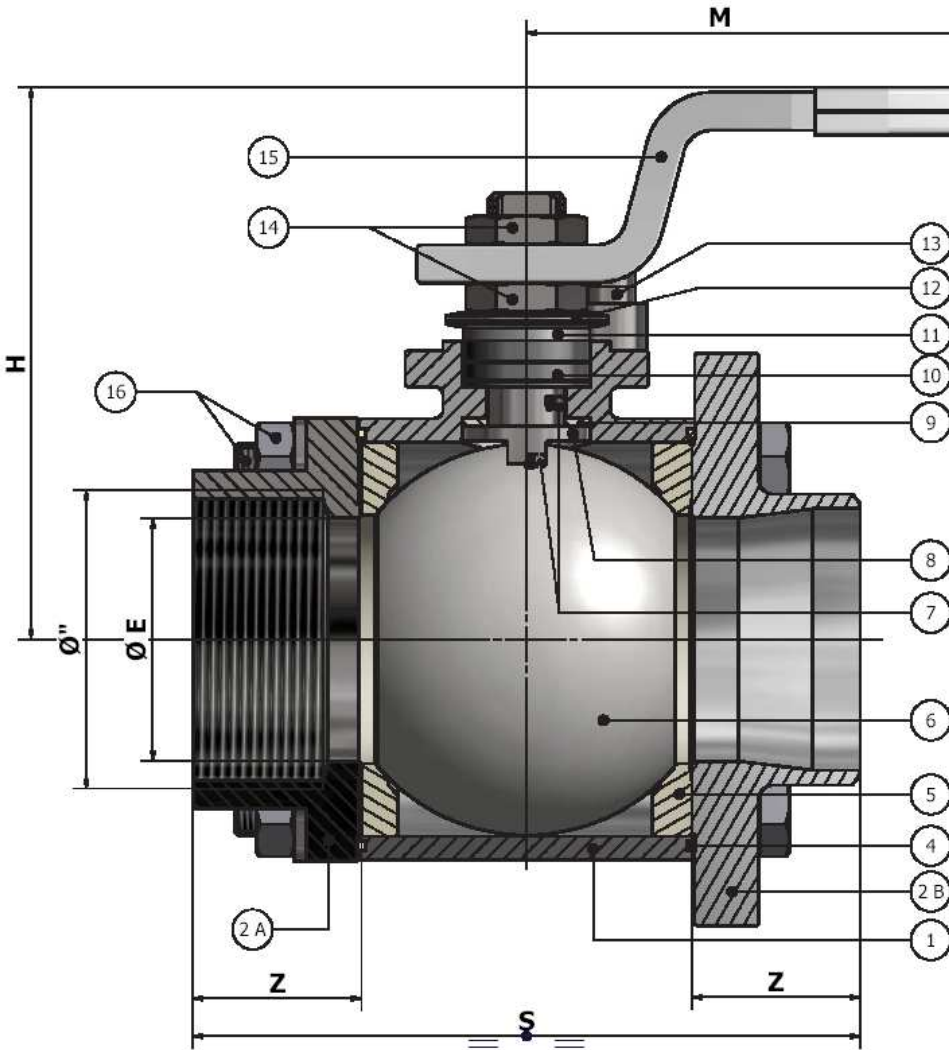
WEB SITE: WWW.ADLERSPA.COM



ISO 9001 by L.R.
 PED DIR. 2014/68/UE by L.R.
 ATEX DIR. 2014/34/UE by B.V.
 FIRE SAFE EXECUTION BS6755/API 607 by L.R.
 FIRE SAFE TESTED ISO 10497 by L.R.
 ISO 15848 by TÜV
 ANTISTATIC DEVICE by L.R.
 EAC CERTIFICATION by B.V.

TYPE
FP3
 PN 20 ÷ 100

VALVOLA A SFERA "3 PEZZI" PASSAGGIO TOTALE
BALL VALVES "3 PIECE" FULL BORE
ROBINETS A BOISSEAU SPHERIQUE "3 PIECES" PASSAGE INTEGRAL
KUGELHÄHNLE "3 TEILIG" VOLLER DURCHGANG

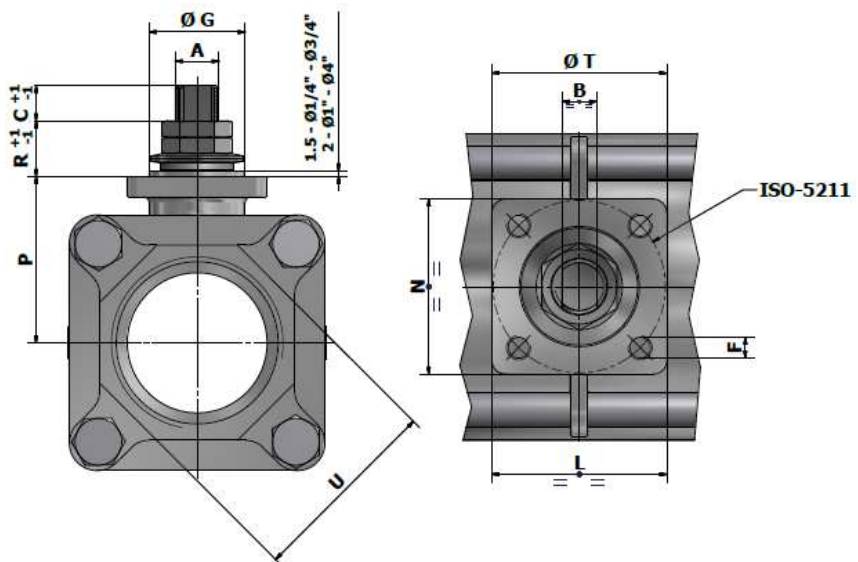


CONNECTIONS:
 EN 10226-1 (EX ISO 7-1 Rp)
 ANSI B1.20.1 NPT
 S.W.
 B.W.

VISUALIZZA 3D
SEE 3D

<https://adlerspa.com/prodotti/fp3>

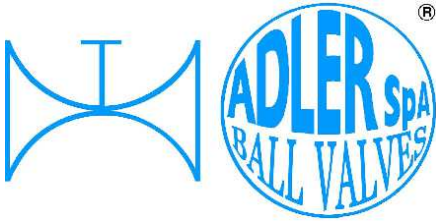
REF. 16
 N° 4
 From ND 1/4" to ND 22
 N° 6
 From ND 2 1/2" to ND 4"



FOR CONNECTION SHAPE OF C.S. VALVES
 SEE EXECUTION 17

FOR CONNECTION SHAPE OF S.S. VALVES
 SEE EXECUTION 18

(FOR DIMENSIONS SEE TABLES ON
 PAG. 3 AND FOR B.W. - S.W. ENDS SEE
 PAG. 6)



ISO 9001 by L.R.
 PED DIR. 2014/68/UE by L.R.
 ATEX DIR. 2014/34/UE by B.V.
 FIRE SAFE EXECUTION BS6755/API 607 by L.R.
 FIRE SAFE TESTED ISO 10497 by L.R.
 ISO 15848 by TÜV
 ANTISTATIC DEVICE by L.R.
 EAC CERTIFICATION by B.V.

TYPE
FP3
 PN 20 ÷ 100

| N. | DESCRIZIONE DESCRIPTION DESCRIPTION BESCHREIBUNG | MATERIALI MATERIALS MATERIAUX WERKSTOFFE |
|----|--|---|
| 1 | CORPO BODY CORPS MITTE | ASTM A351 CF8M ASTM A351 CF8 FOR CARBON STEEL ENDS ON DN 20-40-50-80 |
| 2 | LATERALE END LATERAL ENDE | ASTM A105 (2B G7/NPT) galvanized ASTM A105 (2B BW/SW) burnished ASTM A 351 CF8M (2A G7/NPT) ASTM A 351 CF3M (2A BW/SW) |
| 3 | | |
| 4* | ANELLO SEAL ANNEAU DICHTUNGSRING | P.T.F.E. |
| 5* | SEDE SEAT SIEGE SITZRING | P.T.F.E. R.P.T.F.E. (OPTIONAL) |
| 6 | SFERA BALL BOULE KUGEL | ASTM A479 304/304L ASTM A351 CF8 ASTM A479 316/316L ASTM A351 CF8M |
| 7 | DISPOSITIVO ANTISTATICO ANTISTATIC DEVICE CONTACT ANTISTATIQUE ANTISTATIK VORRICHTUNG | ASTM A479 316/316L |
| 8 | STELO STEM TIGE SPINDEL | ASTM A479 304/304L ASTM A479 316/316L |

| N. | DESCRIZIONE DESCRIPTION DESCRIPTION BESCHREIBUNG | MATERIALI MATERIALS MATERIAUX WERKSTOFFE |
|-----|--|--|
| 9* | BUSSOLA STEM SEAL JOINT TIGE UNTERE SPINDELABDICHTUNG | P.T.F.E. |
| 10* | PACCO A "V" CHEVRON RINGS JOINT A "V" 3 FACHE DACHMANSCHETTE | P.T.F.E. / GRAFITE P.T.F.E. / GRAPHITE P.T.F.E. / GRAPHITE P.T.F.E. / GRAPHIT |
| 11 | PREMIBUSSOLA PRESSING BUSH PRESSE RONDELLE STOPFBUCHSDRUCKRING | ASTM A479 304 |
| 12 | MOLLE A TAZZA SPRING WASHERS RONDELLES BELLEVILLE TELLERFEDERN | C72/50Cr V4 X10CrNi18.8 ZINCATO - GALVANIZED - ZINGUE - VERZINKT ON REQUEST |
| 13 | VITE DI FERMO E FERMO PIN AND STOP PIN PLOT ET PLOT D'ARRET ANSCHLAGBOLZEN | UNI3740 8.8 UNI 3951 A2-70 ZINCATO - GALVANIZED - ZINGUE - VERZINKT ON REQUEST |
| 14 | DADO - CONTRODADO NUT - LOCK NUT ECROU - CONTRE-ECROU MUTTER - KONTERMUTTER | UNI 3740 - 6S ASTM A479 304 ZINCATO - GALVANIZED ZINGUE - VERZINKT ON REQUEST |
| 15 | LEVA WRENCH LEVIER HANDHEBEL | AISI 1010 ASTM A479 304 GALVANIZED AND PAINTED FOR S.S. VALVES PAINTED FOR C.S. VAVLES ON REQUEST |
| 16 | BULLONE BOLT BOULON GEWINDEBOLZEN | UNI 3740 8.8 UNI 3951 A2-70 ZINCATO - GALVANIZED - ZINGUE - VERZINKT ON REQUEST |

* RICAMBI CONSIGLIATI - RECOMMENDED SPARE PARTS - PIECES DE RECHANGE CONSEILLEES - ERSATZTEIL EMPFEHLUNG
 ON REQUEST P.T.F.E. AVAILABLE CERTIFIED BAM, FDA, MOCA

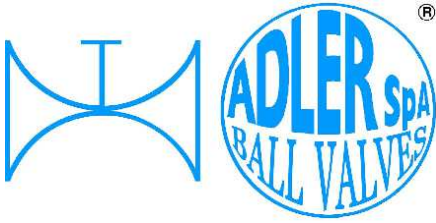
DIMENSIONI - DIMENSION - DIMENSIONS - ABMESSUNGEN

| Ø | 1/4" | 3/8" | 1/2" | 3/4" | 1" | 1 1/4" | 1 1/2" | 2" | 2 1/2" | 3" | 4" | | | |
|--------------------|------|------|------|------|------|--------|--------|--------|--------|--------|--------|---|--|--|
| AxB | 8x5 | 8x5 | 10x6 | 10x6 | 12x8 | 12x8 | 16x10 | 16x10 | 22x14 | 22x14 | 30x18 | | | |
| C | 6 | 6 | 7 | 7 | 10 | 10 | 15 | 15 | 17 | 17 | 17 | | | |
| D | 34,6 | 34,6 | 43,1 | 49,2 | 60,8 | 67,9 | 84 | 101,8 | 123 | 143 | 176 | | | |
| E | 10 | 10 | 15 | 19 | 25 | 30 | 38 | 51 | 64 | 76 | 101 | | | |
| F | M5 | M5 | M5 | M5 | M5 | M5 | M6 | M6 | M8 | M8 | M8 | | | |
| ISO | F03 | F03 | F03 | F03 | F03 | F03 | F05 | F05 | F07 | F07 | F07 | | | |
| G | 25 | 25 | 25 | 25 | 25 | 25 | 35 | 35 | 55 | 55 | 55 | | | |
| H | 46 | 46 | 66 | 68 | 85 | 91 | 106 | 116 | 140 | 148 | 174 | | | |
| L=N | 33 | 33 | 36 | 36 | 36 | 36 | 51 | 51 | 65 | 65 | 70 | | | |
| M | 120 | 120 | 145 | 145 | 185 | 185 | 280 | 280 | 370 | 370 | 470 | | | |
| P | 22,2 | 22,2 | 32,5 | 35 | 41 | 45,5 | 53 | 60,5 | 77,5 | 86 | 99,5 | | | |
| R | 7 | 7 | 8 | 8 | 17 | 17 | 20 | 20 | 23 | 23 | 26 | | | |
| S | 50 | 60 | 75 | 80 | 90 | 110 | 120 | 140 | 185 | 205 | 240 | | | |
| T | 36 | 36 | 36 | 36 | 36 | 36 | 50 | 50 | 70 | 70 | 70 | | | |
| U | | 22 | 26 | 32 | 38 | 47 | 54 | 66 | | | | ONLY FOR MICROCASTED ENDS G7, NPT AND S.W. | | |
| Z | 15,1 | 20,1 | 24,5 | 25,7 | 26,5 | 32,7 | 33,2 | 34,75 | 51 | 54 | 61 | | | |
| Bolts M | 5x40 | 5x40 | 6x55 | 6x55 | 8x70 | 8x80 | 10x90 | 10x110 | 12x120 | 14x140 | 14x170 | | | |
| PN | 100 | 100 | 63 | 63 | 40 | 40 | 40 | 40 | 25 | 25 | 20 | | | |
| Kg | 0,3 | 0,35 | 0,75 | 0,85 | 1,35 | 1,75 | 3,3 | 4,9 | 8 | 15 | 23,5 | ENDS FROM BAR STOCK | | |
| Kg | | | | | | | | | | | | ENDS FROM CAST | | |

- DATI E CARATTERISTICHE SOGGETTI A VARIAZIONI SENZA PREAVVISO
- SPECIFICATIONS SUBJECT TO MODIFICATION WITHOUT PRIOR NOTICE
- TOUS DROITS DE MODIFICATION RESERVES
- KONSTRUKTIONSÄNDERUNGEN VORBEHALTEN



ADLER SpA - BALL VALVES
 20010 S. STEFANO TICINO (MI) ITALY V.le BORLETTI, 14 Tel. +39/02974842.11 FAX +39/0297271698
 E-mail: adler@adlerspa.com <http://www.adlerspa.com>



ISO 9001 by L.R.
 PED DIR. 2014/68/UE by L.R.
 ATEX DIR. 2014/34/UE by B.V.
 FIRE SAFE EXECUTION BS6755/API 607 by L.R.
 FIRE SAFE TESTED ISO 10497 by L.R.
 ISO 15848 by TÜV
 ANTISTATIC DEVICE by L.R.
 EAC CERTIFICATION by B.V.

TYPE
FP3
 PN 20 ÷ 100

▪ ESECUZIONI ▪ EXECUTIONS ▪ EXECUTIONS ▪ AUSFÜHRUNGEN



EXECUTION 4 - 12



EXECUTION 6 - 16

S STANDARD

O OPTIONAL

1 **S**

CYLINDRICAL THREAD

EN 10226-1 (ex ISO 7-1 Rp)

S

ONLY FOR VALVES ≥ DN 50

FORO DI BILANCIAMENTO
 BALANCING HOLE
 TROU DE BALANCEMENT
 DRUCKENTLASTUNGSBOHRUNG

ON REQUEST AVAILABLE ON DN ≤ 40

3 **S**

-TIRANTI GUIDATI - GUIDED BOLTS
 -BOULONS GUIDES -ZUGBOLZEN GEFÜHRT

4 **S**

-STELO ANTI ESPULSIONE -ANTI BLOW OUT STEM
 -TIGE ANTIEXPULSION -AUSBLASGESICHERETE WELLE

-PACCO A "V" -CHEVRON RINGS
 -JOINT A "V" -3 FACHE DACHMANSCHETE
 ANTISTATIC DEVICE ANTISTATIK VORRICHTUNG
 BS 5146

5 **O**

DN 10 ÷ 32

103 (DN 10 - 20)
 145 (DN 25 - 32)
 69 (DN 10 - 20)
 79 (DN 25 - 32)
 57

-MANIGLIA OVALE - OVAL HANDLE
 -LEVIER OVAL -HANDHEBEL IN OVALFORM

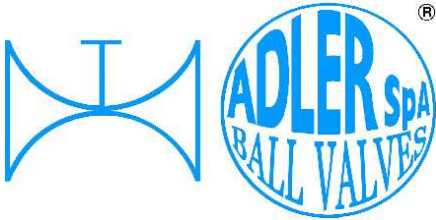
6 **O**

BREVETTO - PATENTED
 00219688 - 21-04-1993

FKM (VITON)

From Ø ½" to 4"

-"O" RING STELO "O" RING ON STEM
 -TIGE AVEC "O" RING
 -"O" RING IM SPINDELBEREICH



ISO 9001 by L.R.
 PED DIR. 2014/68/UE by L.R.
 ATEX DIR. 2014/34/UE by B.V.
 FIRE SAFE EXECUTION BS6755/API 607 by L.R.
 FIRE SAFE TESTED ISO 10497 by L.R.
 ISO 15848 by TÜV
 ANTISTATIC DEVICE by L.R.
 EAC CERTIFICATION by B.V.

TYPE
FP3
 PN 20 ÷ 100

7 **O**

-PROLUNGA STELO -STEM EXTENSION
 -TIGE PROLONGEE -SPINDELVERLÄNGERUNG

8 **O**

-PARTICOLARI INOX
 -STAINLESS STEEL DETAILS
 -ACCESSOIRES EN INOX
 -EDELSTAHLTEILE

9 **S**

-ATTACCO "ISO" -"ISO" CONNECTIONS
 -SYSTEM "ISO" -ANSCHLUSS "ISO"

10 **O**

-SFERA CIECA PER CAMPIONATURA
 -BLIND BALL FOR SAMPLING
 -PRISE-ECHANTILLON
 KUGEL FÜR PROBEENTNAHME

11 **O**

-TENUTA INTEGRALE -POCKETLESS SEATS
 -TENUE INTEGRALE -TOTRAUMARM

12 **O**

FIRE SAFE
 ISO 10497 "ISO-FT"
 (BS 6755 / API 607)

13 **S**

-ANELLO CONTENUTO -ANNEAU CONTENU
 -CONTAINED SEAL -DICHTRING GEKAMMERT

14 **O**

VEDERE / SEE ANSI B16.34

FLUSSO
 FLOW

-FORO DI SCARICO NELLA SFERA
 -OVERPRESSURE HOLE INTO BALL
 -TROU DECOMPRESSION DANS LA BOULE
 -ENTLASTUNGSBOHRUNG IN DER KUGEL
 VALVOLA MONO DIREZIONALE
 MONO-DIRECTIONAL VALVE

15 **O**

P.T.F.E./GRAPHITE
 P.T.F.E.
 100-250

-SERVIZIO CRIOGENICO - CRYOGENIC SERVICE
 -SERVICE CRYOGÉNIQUE
 -TIEFTEMPORATUR SERVICE

16 **O**

-FIRE SAFE ISO FT+ "O" RING STELO
 -FIRE SAFE ISO FT+ "O" RING ON STEM
 -SECURITE FEU ISO FT+ TIGE AVEC "O" RING
 -FEUERSICHERE AUSFÜHRUNG ISO FT +
 "O" RING IM SPINDELBEREICH

17 **S**

LATERALI DA BARRA
 ENDS FROM BAR STOCK
 (ASTM A 105)
 G7 Rp / NPT galvanized
 BW / SW burnished

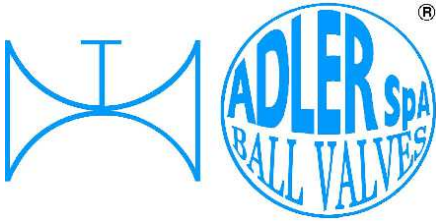
CONNECTION SHAPE

18 **S**

LATERALI MICROFUSI
 MICROCAST ENDS
 (ASTM A351 CF8M TYPE G7 Rp and NPT)
 (ASTM A351 CF3M TYPE BW and SW)

03/8"- 2" G7-NPT-SW 01/4" / 02 1/2" - 4" G7-NPT-SW
 01/4"- 4" BW

CONNECTION SHAPE



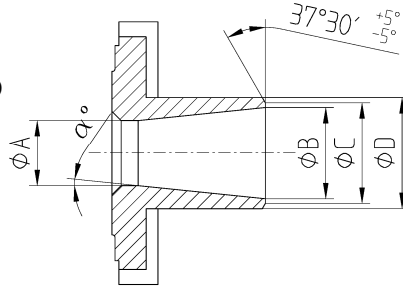
ISO 9001 by L.R.
 PED DIR. 2014/68/UE by L.R.
 ATEX DIR. 2014/34/UE by B.V.
 FIRE SAFE EXECUTION BS6755/API 607 by L.R.
 FIRE SAFE TESTED ISO 10497 by L.R.
 ISO 15848 by TÜV
 ANTISTATIC DEVICE by L.R.
 EAC CERTIFICATION by B.V.

TYPE
FP3
 PN 20 ÷ 100

DIMENSIONI LATERALI - ENDS DIMENSION - DIMENSIONS LATERAL - ABMESSUNGEN GEHÄUSEFLANSCH

**BUTT WELDING
 UNI EN 12627**

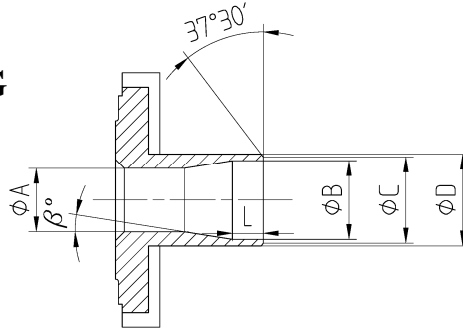
(Standard ADLER – EX DIN 3239)



| Ø | 1/4" | 3/8" | 1/2" | 3/4" | 1" | 1 1/4" | 1 1/2" | 2" | 2 1/2" | 3" | 4" |
|-----|------|------|------|------|----|--------|--------|----|--------|----|-----|
| Ø A | 10 | 10 | 15 | 19 | 25 | 30 | 38 | 51 | 64 | 76 | 101 |
| Ø B | 10 | 13 | 17 | 22 | 28 | 36.2 | 43 | 54 | 70 | 82 | 106 |
| Ø C | 12 | 15 | 19 | 24 | 30 | 38.2 | 45 | 56 | 72 | 84 | 108 |
| Ø D | 14 | 18 | 22 | 28 | 34 | 42.2 | 49 | 61 | 77 | 90 | 115 |
| α ° | 0 | 5° | 3° | 4° | 4° | 7° | 5° | 3° | 4° | 5° | 3° |

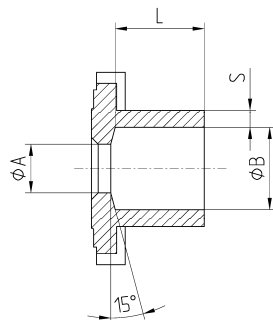
**BUTT WELDING
 ANSI B 16.25**

(OPTIONAL)



| Ø | 1/4" | 3/8" | 1/2" | 3/4" | 1" | 1 1/4" | 1 1/2" | 2" | 2 1/2" | 3" | 4" |
|-----|------|------|------|------|------|--------|--------|------|--------|------|-------|
| Ø A | 10 | 10 | 15 | 19 | 25 | 30 | 38 | 51 | 64 | 76 | 101 |
| Ø B | 10 | 12,5 | 15,8 | 21 | 26,7 | 35,1 | 40,9 | 52,5 | 62,7 | 77,9 | 102,3 |
| Ø C | 11,6 | 14,1 | 17,4 | 22,6 | 28,3 | 36,7 | 42,5 | 54,5 | 64,7 | 79,9 | 104,3 |
| Ø D | 14 | 17,5 | 22 | 27,5 | 34,5 | 43,5 | 50 | 62 | 73 | 90 | 114,3 |
| L | | 3,5 | 4,2 | 4,3 | 5,1 | 5,4 | 5,6 | 5,9 | 7,8 | - | 9,1 |
| β ° | | 5° | 5° | 4° | 3° | 7° | 4° | 2° | 2° | 2° | 2° |

**SOCKET WELDING
 ADLER STANDARD**



| Ø | 1/4" | 3/8" | 1/2" | 3/4" | 1" | 1 1/4" | 1 1/2" | 2" | 2 1/2" | 3" | 4" |
|-----|------|------|------|------|------|--------|--------|------|--------|------|-------|
| Ø A | 10 | 10 | 15 | 19 | 25 | 30 | 38 | 51 | 64 | 76 | 101 |
| Ø B | 13,8 | 17,7 | 21,8 | 27,4 | 34,2 | 42,8 | 48,9 | 61 | 76,6 | 89,6 | 115,2 |
| L | 10 | 16,5 | 21 | 21 | 21 | 26 | 26,5 | 27,3 | 42,5 | 46 | 51 |
| L* | 10 | 10 | 10 | 13 | 13 | 13 | 13 | 16 | 16 | 16 | 20 |
| S | 2,1 | 2,15 | 2,1 | 2,3 | 1,8 | 2,1 | 2,55 | 2,5 | 2,7 | 2,95 | 3,4 |

* Dimensione per Laterale da barra / Dimension for End by bar