

ISO 9001 by L.R.
PED DIR. 2014/68/UE by L.R.
ATEX DIR. 2014/34/UE by B.V.
FIRE SAFE EXECUTION by L.R.
ISO 15848 by TÜV
ANTISTATIC DEVICE by L.R.
FIRE SAFE TESTED ISO 10497 by L.R.
EAC CERTIFICATION by B.V

TYPE
FP3
PN 20 ÷ 100

NORME E DIRETTIVE APPLICATE DISPONIBILI AL SEGUENTE LINK:
STANDARD AND DIRECTIVE APPLIED AVAILABLE AT FOLLOWING LINK:
http://www.adlerspa.com/pdf/NORME_ADLER.pdf

VALVOLE A SFERA "3 PEZZI" PASSAGGIO TOTALE GAS ISO 7-1 - ANSI B1.20.1 NPT - S.W. - B.W.



CONSTRUCTION ACCORDING TO:
BS EN 12516-2 - DIN 3202 M3
ISO 14313

FULL BORE ACCORDING
TO ISO 14313

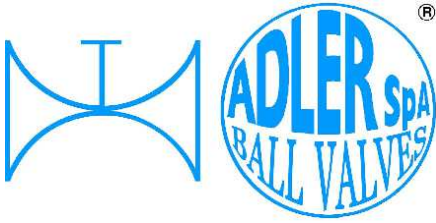
On request
FIRE SAFE
According to ISO 10497
"ISO-FT"

On request
S.I.L. 3
According to IEC 61508

On request
Certified
TPED 2010/35/UE
ADR/RID/ADNR 2019
EN 14432-2014
FROM DN 15 TO DN 50 PN 40

BALL VALVES "3 PIECES" FULL BORE
ROBINETS A BOISSEAU SPHERIQUE
"3 PIECES" PASSAGE INTEGRAL
KUGELHÄHNE "3 TEILIG"
VOLLER DURCHGANG

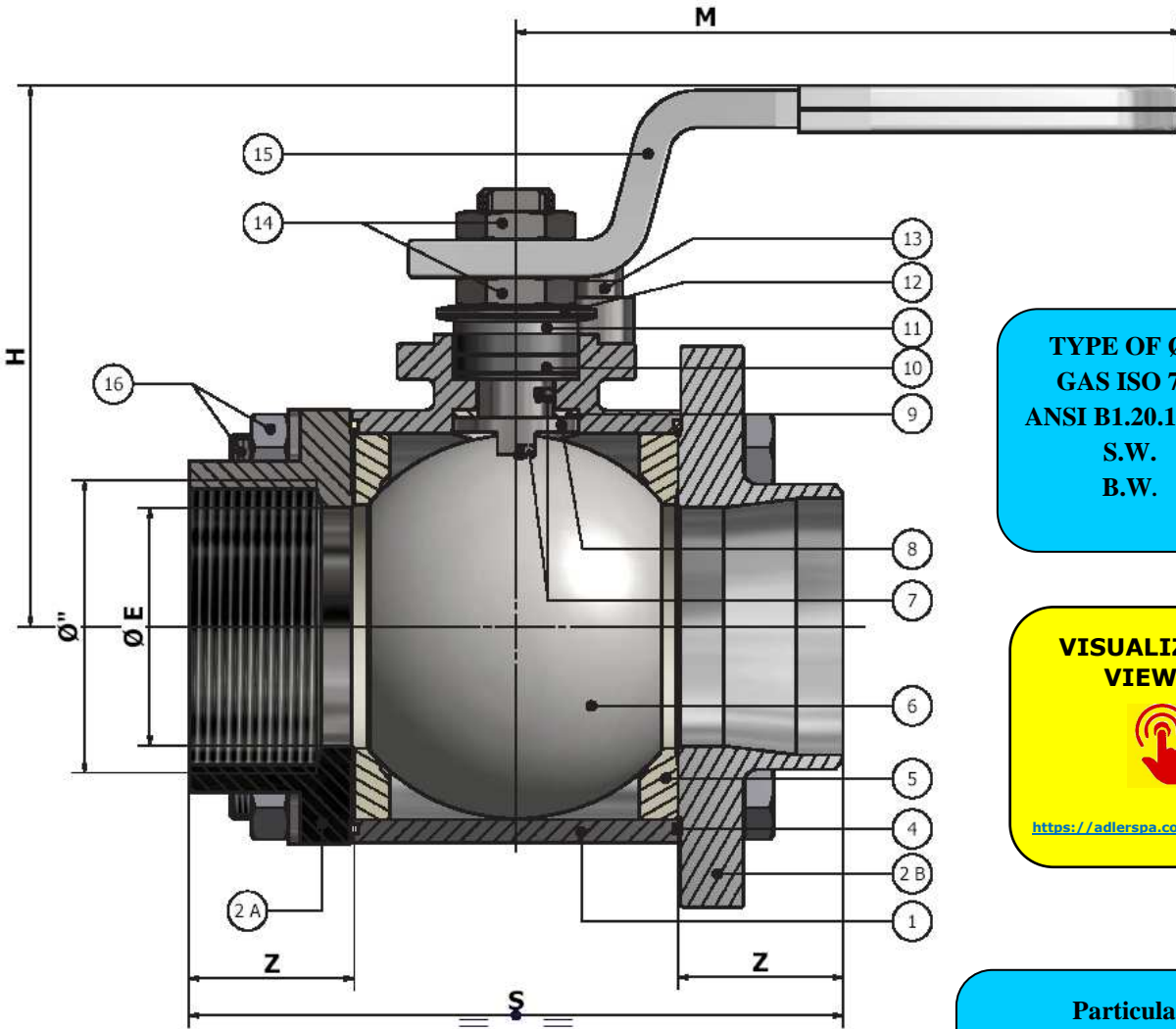
WEB SITE: WWW.ADLERSPA.COM



ISO 9001 by L.R.
 PED DIR. 2014/68/UE by L.R.
 ATEX DIR. 2014/34/UE by B.V.
 FIRE SAFE EXECUTION by L.R.
 ISO 15848 by TÜV
 ANTISTATIC DEVICE by L.R.
 FIRE SAFE TESTED ISO 10497 by L.R.
 EAC CERTIFICATION by B.V

TYPE
FP3
 PN 20 ÷ 100

VALVOLA A SFERA "3 PEZZI" PASSAGGIO TOTALE
BALL VALVES "3 PIECE" FULL BORE
ROBINETS A BOISSEAU SPHERIQUE "3 PIECES" PASSAGE INTEGRAL
KUGELHÄHNE "3 TEILIG" VOLLER DURCHGANG

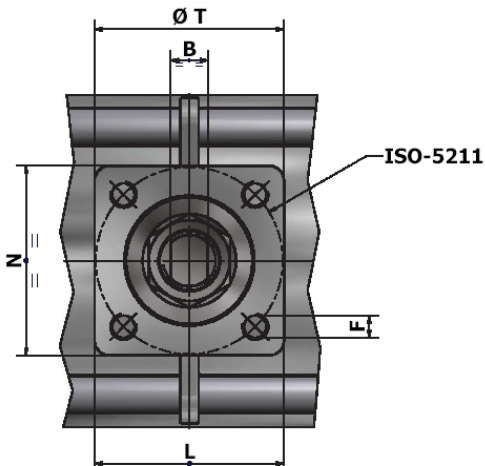
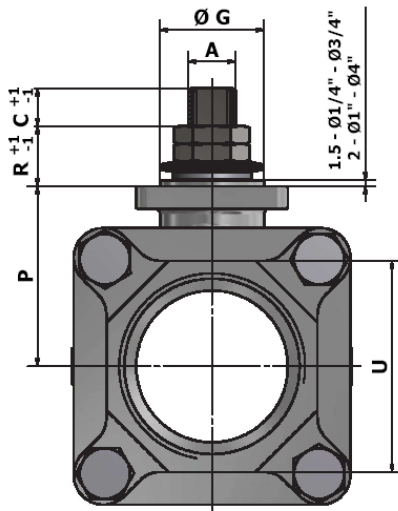


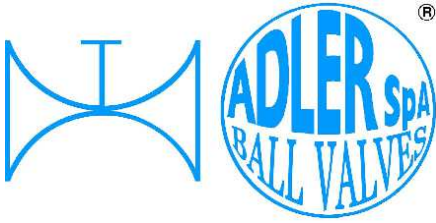
TYPE OF Ø":
 GAS ISO 7-1
 ANSI B1.20.1 NPT
 S.W.
 B.W.

**VISUALIZZA 3D
 VIEW 3D**

<https://adlerspa.com/prodotti/fp3>

Particular 16
 N° 4
 From DN 06 to DN 50
 N° 6
 From DN 65 to DN 100





ISO 9001 by L.R.
 PED DIR. 2014/68/UE by L.R.
 ATEX DIR. 2014/34/UE by B.V.
 FIRE SAFE EXECUTION by L.R.
 ISO 15848 by TÜV
 ANTISTATIC DEVICE by L.R.
 FIRE SAFE TESTED ISO 10497 by L.R.
 EAC CERTIFICATION by B.V

TYPE
FP3
 PN 20 ÷ 100

N.	DESCRIZIONE DESCRIPTION DESCRIPTION BESCHREIBUNG	MATERIALI MATERIALS MATERIAUX WERKSTOFFE
1	CORPO BODY CORPS MITTE	ASTM A 351 CF8M
2	LATERALE END LATERAL ENDE	ASTM A105 (2B G7/NPT) galvanized ASTM A105 (2B BW/SW) painted ASTM A 351 CF8M (2A G7/NPT) ASTM A 351 CF3M (2A BW/SW)
3		
4*	ANELLO SEAL ANNEAU DICHTUNGSRING	P.T.F.E.
5*	SEDE SEAT SIEGE SITZRING	P.T.F.E. R.P.T.F.E. (OPTIONAL)
6	SFERA BALL BOULE KUGEL	ASTM A479 304/304L ASTM A351 CF8 ASTM A479 316/316L ASTM A351 CF8M
7	DISPOSITIVO ANTISTATICO ANTISTATIC DEVICE CONTACT ANTISTATIQUE ANTISTATIK VORRICHTUNG	ASTM A479 316/316L
8	STELO STEM TIGE SPINDEL	ASTM A479 304/304L ASTM A479 316/316L

N.	DESCRIZIONE DESCRIPTION DESCRIPTION BESCHREIBUNG	MATERIALI MATERIALS MATERIAUX WERKSTOFFE
9*	BUSSOLA STEM SEAL JOINT TIGE UNTERE SPINDELABDICHTUNG	P.T.F.E.
10*	PACCO A "V" CHEVRON RINGS JOINT A "V" 3 FACHE DACHMANSCHETTE	P.T.F.E. / GRAFITE P.T.F.E. / GRAPHITE P.T.F.E. / GRAPHITE P.T.F.E. / GRAPHIT
11	PREMIBUSSOLA PRESSING BUSH PRESSE RONDELLE STOPFBUCHSDRUCKRING	ASTM A479 304
12	MOLLE A TAZZA SPRING WASHERS RONDELLES BELLEVILLE TELLERFEDERN	C72/50Cr V ₄ X10CrNi18.8 ZINCATO - GALVANIZED - ZINGUE - VERZINKT ON REQUEST
13	VITE DI FERMO E FERMO PIN AND STOP PIN PLOT ET PLOT D'ARRET ANSCHLAGBOLZEN	UNI3740 8.8 UNI 3951 A2-70 ZINCATO - GALVANIZED - ZINGUE - VERZINKT ON REQUEST
14	DADO - CONTRODADO NUT - LOCK NUT ECROU - CONTRE-ECROU MUTTER - KONTERMUTTER	UNI 3740 - 6S ASTM A479 304 ZINCATO - GALVANIZED ZINGUE - VERZINKT ON REQUEST
15	LEVA WRENCH LEVIER HANDHEBEL	AISI 1010 ASTM A479 304 CHROMED FOR S.S. VALVES PAINTED FOR C.S. VALVES ON REQUEST
16	BULLONE BOLT BOULON GEWINDEBOLZEN	UNI 3740 8.8 UNI 3951 A2-70 ZINCATO - GALVANIZED - ZINGUE - VERZINKT ON REQUEST

* RICAMBI CONSIGLIATI - RECOMMENDED SPARE PARTS - PIECES DE RECHANGE CONSEILLEES - ERSATZTEIL EMPFEHLUNG

ON REQUEST P.T.F.E. AVAILABLE CERTIFIED BAM, FDA, MOCA

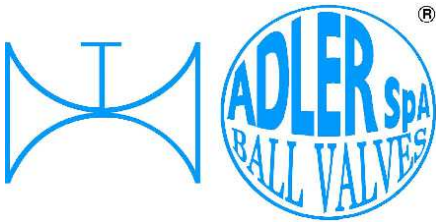
DIMENSIONI - DIMENSION - DIMENSIONS - ABMESSUNGEN

Ø	1/4"	3/8"	1/2"	3/4"	1"	1 1/4"	1 1/2"	2"	2 1/2"	3"	4"	5"	6"	8"
AxB	8x5	8x5	10x6	10x6	12x8	12x8	16x10	16x10	22x14	22x14	30x18			
C	6	6	7	7	10	10	15	15	17	17	17			
D	34,6	34,6	43,1	49,2	60,8	67,9	84	101,8	123	143	176			
E	10	10	15	19	25	30	38	51	64	76	101			
F	M5	M5	M5	M5	M5	M5	M6	M6	M8	M8	M8			
ISO	F03	F03	F03	F03	F03	F03	F05	F05	F07	F07	F07			
G	25	25	25	25	25	25	35	35	55	55	55			
H	46	46	66	68	85	91	106	116	140	148	174			
L=N	33	33	36	36	36	36	51	51	65	65	70			
M	120	120	145	145	185	185	280	280	370	370	470			
P	22,2	22,2	32,5	35	41	45,5	53	60,5	77,5	86	99,5			
R	7	7	8	8	17	17	20	20	23	23	26			
S	50	60	75	80	90	110	120	140	185	205	240			
T	36	36	36	36	36	36	50	50	70	70	70			
U	12	22	26	32	38	47	54	66	82	95,5	122			
Z	15,1	20,1	24,5	25,7	26,5	32,7	33,2	34,75	51	54	61			
Bolts M	5x40	5x40	6x55	6x55	8x70	8x80	10x90	10x110	12x120	14x140	14x170			
PN	100	100	63	63	40	40	40	40	25	25	20			
Kg	0,3	0,35	0,75	0,85	1,35	1,75	3,3	4,9	11	15	23,5			

- DATI E CARATTERISTICHE SOGGETTI A VARIAZIONI SENZA PREAVVISO
- SPECIFICATIONS SUBJECT TO MODIFICATION WITHOUT PRIOR NOTICE
- TOUS DROITS DE MODIFICATION RESERVES
- KONSTRUKTIONSÄNDERUNGEN VORBEHALTEN



ADLER SpA - BALL VALVES
 20010 S. STEFANO TICINO (MI) ITALY V.le BORLETTI, 14 Tel. +39/02974842.11 FAX +39/0297271698
 E-mail: adler@adlerspa.com <http://www.adlerspa.com>



ISO 9001 by L.R.
 PED DIR. 2014/68/UE by L.R.
 ATEX DIR. 2014/34/UE by B.V.
 FIRE SAFE EXECUTION by L.R.
 ISO 15848 by TÜV
 ANTISTATIC DEVICE by L.R.
 FIRE SAFE TESTED ISO 10497 by L.R.
 EAC CERTIFICATION by B.V

TYPE
FP3
 PN 20 ÷ 100

• ESECUCIONI • EXECUTIONS • EXECUTIONS • AUSFÜHRUNGEN



EXECUTION 4- 12



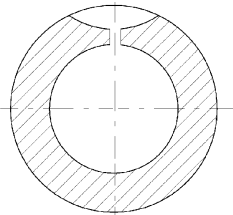
EXECUTION 6 - 16

S STANDARD

O OPTIONAL

ONLY FOR VALVES \geq DN 50

S



FORO DI BILANCIAMENTO
 BALANCING HOLE
 TROU DE BALANCEMENT
 DRUCKENTLASTUNGSBOHRUNG

ON REQUEST AVAILABLE ON DN \leq 40

2

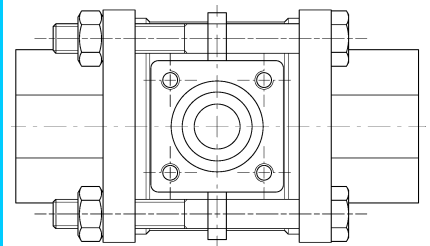
BAR EXECUTION

O



3

S

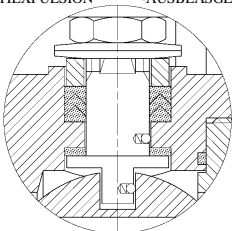


-TIRANTI GUIDATI - GUIDED BOLTS
 -BOULONS GUIDES -ZUGBOLZEN GEFÜHRT

4

S

-STELO ANTI ESPULSIONE -ANTI BLOW OUT STEM
 -TIGE ANTIEXPULSION -AUSBLASGESICHERETE WELLE

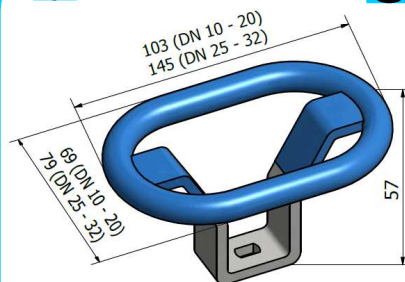


-PACCO A "V" -CHEVRON RINGS
 -JOINT A "V" -3 FACHE DACHMANSCHETE
 ANTISTATIC DEVICE ANTISTATIK VORRICHTUNG
 BS 5146

5

DN 10 ÷ 32

O

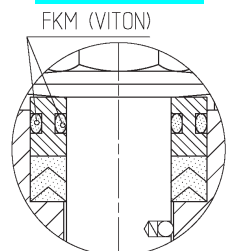


-MANIGLIA OVALE - OVAL HANDLE
 -LEVIER OVAL -HANDHEBEL IN OVALFORM

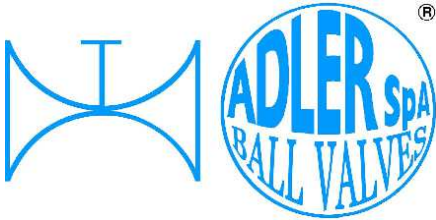
6

BREVETTO - PATENTED
 00219688 - 21-04-1993

O



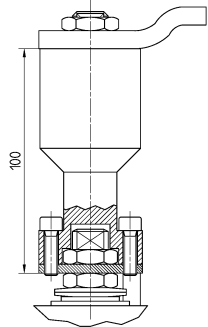
-“O” RING STELO “O” RING ON STEM
 -TIGE AVEC “O” RING
 -“O” RING IM SPINDELBEREICH



ISO 9001 by L.R.
 PED DIR. 2014/68/UE by L.R.
 ATEX DIR. 2014/34/UE by B.V.
 FIRE SAFE EXECUTION by L.R.
 ISO 15848 by TÜV
 ANTISTATIC DEVICE by L.R.
 FIRE SAFE TESTED ISO 10497 by L.R.
 EAC CERTIFICATION by B.V

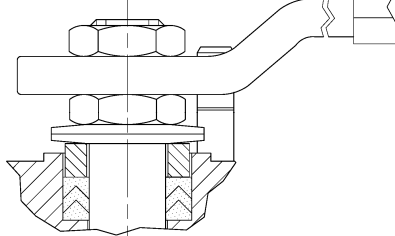
TYPE
FP3
 PN 20 ÷ 100

7 **O**



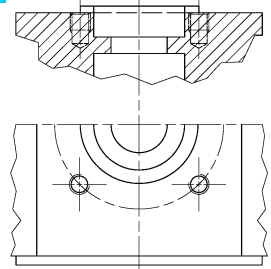
-PROLUNGA STELO -STEM EXTENSION
 -TIGE PROLONGEE -SPINDELVERLÄNGERUNG

8 **O**



-PARTICOLARI INOX
 -STAINLESS STEEL DETAILS
 -ACCESSOIRES EN INOX
 -EDELSTAHLTEILE

9 **S**

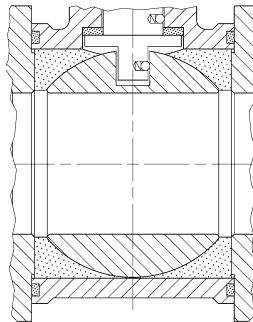


-ATTACCO "ISO" -"ISO" CONNECTIONS
 -SYSTEM "ISO" -ANSCHLUSS "ISO"

THREAD GAUGES



11 **O**



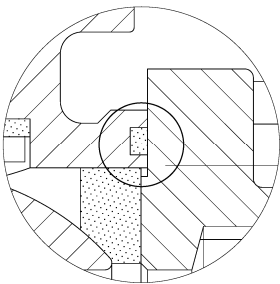
-TENUTA INTEGRALE -POCKETLESS SEATS
 -TENUCE INTEGRALE -TOTRAUMARM

12 **O**

FIRE SAFE
ISO 10497 "ISO-FT"
(BS 6755 / API 607)



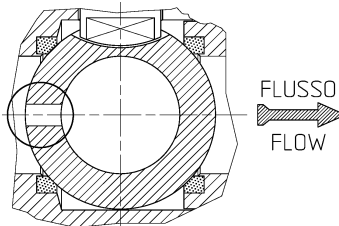
13 **S**



-ANELLO CONTENUTO -ANNEAU CONTENU
 -CONTAINED SEAL -DICHTRING GEKAMMERT

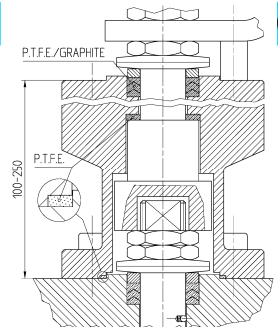
14 **O**

VEDERE / SEE ANSI B16.34



-FORO DI SCARICO NELLA SFERA
 -OVERPRESSURE HOLE INTO BALL
 -TROU DECOMPRESSION DANS LA BOULE
 -ENTLASTUNGSBOHRUNG IN DER KUGEL
VALVOLA MONO DIREZIONALE
MONO-DIRECTIONAL VALVE

15 **O**



-SERVIZIO CRIOGENICO - CRYOGENIC SERVICE
 -SERVICE CRYOGENIQUE
 -TIEFTEMPORATUR SERVICE

16 **O**

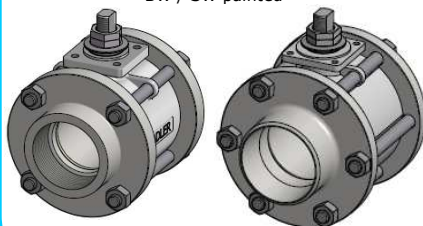


-FIRE SAFE ISO FT+ "O" RING STELO
 -FIRE SAFE ISO FT+ "O" RING ON STEM
 -SECURITE FEU ISO FT+ TIGE AVEC "O" RING
 -FEUERSICHERE AUSFÜHRUNG ISO FT+
 "O" RING IM SPINDELBEREICH

17 **S**

LATERALI DA BARRA
ENDS FROM BAR STOCK

(ASTM A 105)
 G7 / NPT galvanized
 BW / SW painted



18 **S**

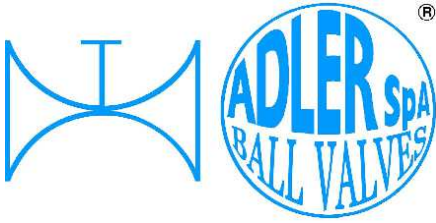
LATERALI MICROFUSI
MICROCAST ENDS

(ASTM A351 CF8M TYPE G7 and NPT)
 (ASTM A351 CF3M TYPE BW and SW)



Ø1/4" - 2"

Ø2 1/2" - 4"



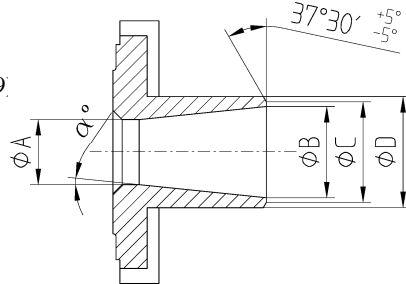
ISO 9001 by L.R.
 PED DIR. 2014/68/UE by L.R.
 ATEX DIR. 2014/34/UE by B.V.
 FIRE SAFE EXECUTION by L.R.
 ISO 15848 by TÜV
 ANTISTATIC DEVICE by L.R.
 FIRE SAFE TESTED ISO 10497 by L.R.
 EAC CERTIFICATION by B.V

TYPE
FP3
 PN 20 ÷ 100

DIMENSIONI LATERALI - ENDS DIMENSION - DIMENSIONS LATERAL - ABMESSUNGEN GEHÄUSEFLANSCH

**BUTT WELDING
 UNI EN 12627**

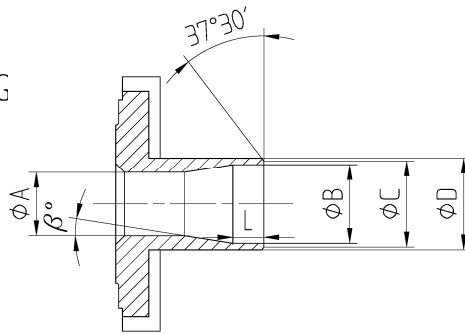
(Standard ADLER – EX DIN 3239)



\emptyset	1/4"	3/8"	1/2"	3/4"	1"	1 1/4"	1 1/2"	2"	2 1/2"	3"	4"
$\emptyset A$	10	10	15	19	25	30	38	51	64	76	101
$\emptyset B$	10	13	17	22	28	36.2	43	54	70	82	106
$\emptyset C$	12	15	19	24	30	38.2	45	56	72	84	108
$\emptyset D$	14	18	22	28	34	42.2	49	61	77	90	115
α°	0	5°	3°	4°	4°	7°	5°	3°	4°	5°	3°

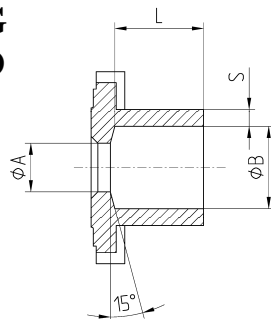
**BUTT WELDING
 ANSI B 16.25**

(OPTIONAL)



\emptyset	1/4"	3/8"	1/2"	3/4"	1"	1 1/4"	1 1/2"	2"	2 1/2"	3"	4"
$\emptyset A$	10	10	15	19	25	30	38	51	64	76	101
$\emptyset B$	10	12,5	15,8	21	26,7	35,1	40,9	52,5	62,7	77,9	102,3
$\emptyset C$	11,6	14,1	17,4	22,6	28,3	36,7	42,5	54,5	64,7	79,9	104,3
$\emptyset D$	14	17,5	22	27,5	34,5	43,5	50	62	73	90	114,3
L		3,5	4,2	4,3	5,1	5,4	5,6	5,9	7,8	-	9,1
β°		5°	5°	4°	3°	7°	4°	2°	2°	2°	2°

**SOCKET WELDING
 ADLER STANDARD**



\emptyset	1/4"	3/8"	1/2"	3/4"	1"	1 1/4"	1 1/2"	2"	2 1/2"	3"	4"
$\emptyset A$	10	10	15	19	25	30	38	51	64	76	101
$\emptyset B$	13,8	17,7	21,8	27,4	34,2	42,8	48,9	61	76,6	89,6	115,5
L	10	16,5	21	21	21	26	26,6	27,3	42,5	46	51
L*	10	10	10	13	13	13	13	16	16	16	20
S	2,1	2,15	2,1	2,3	1,8	2,1	2,55	2,5	2,7	2,95	3,4

* Laterale da barra / End by bar