

ISO 9001 by L.R.
PED DIR. 2014/68/UE by L.R.
ATEX DIR. 2014/34/UE by B.V.
FIRE SAFE EXECUTION by L.R.
ISO 15848 by TÜV
ANTISTATIC DEVICE by L.R.
FIRE SAFE TESTED ISO 10497 by L.R.
EAC CERTIFICATION by B.V

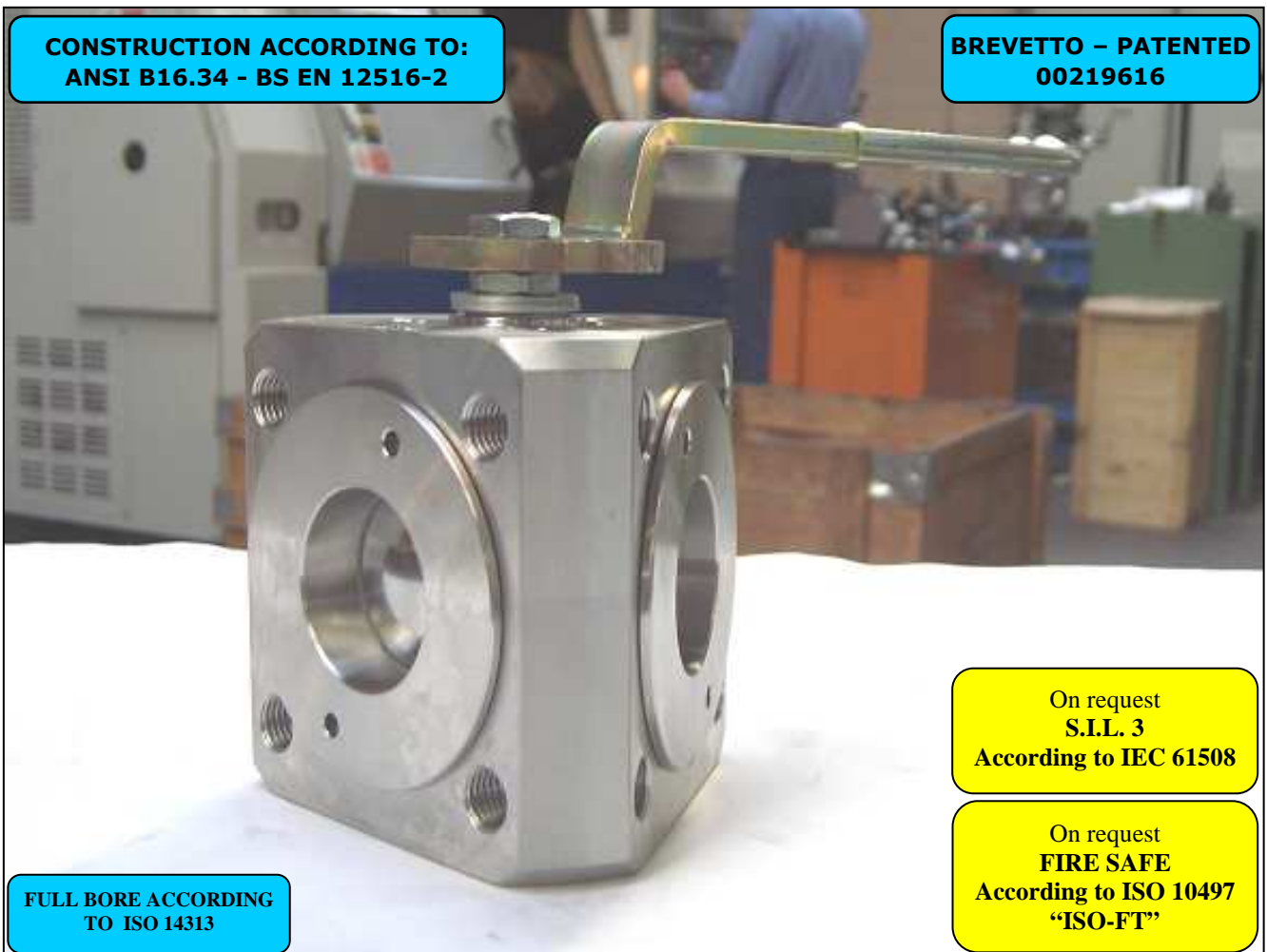
TYPE
FU4
PN 10 ÷ 40
ANSI 150

NORME E DIRETTIVE APPLICATE DISPONIBILI AL SEGUENTE LINK:
STANDARD AND DIRECTIVE APPLIED AVAILABLE AT FOLLOWING LINK:
http://www.adlerspa.com/pdf/NORME_ADLER.pdf

VALVOLE A SFERA "3 VIE CORPO PIATTO" PASSAGGIO TOTALE 120°

CONSTRUCTION ACCORDING TO:
ANSI B16.34 - BS EN 12516-2

BREVETTO - PATENTED
00219616



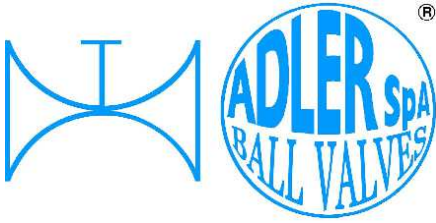
FULL BORE ACCORDING
TO ISO 14313

On request
S.I.L. 3
According to IEC 61508

On request
FIRE SAFE
According to ISO 10497
"ISO-FT"

BALL VALVES "3 WAY WAFER" FULL BORE 120°
ROBINETS A BOISSEAU SPHERIQUE
"3 VOIES WAFER" PASSAGE INTEGRAL 120°
KUGELHÄHNE "3 WEGE KOMPAKTHAHN"
VOLLER DURCHGANG 120°

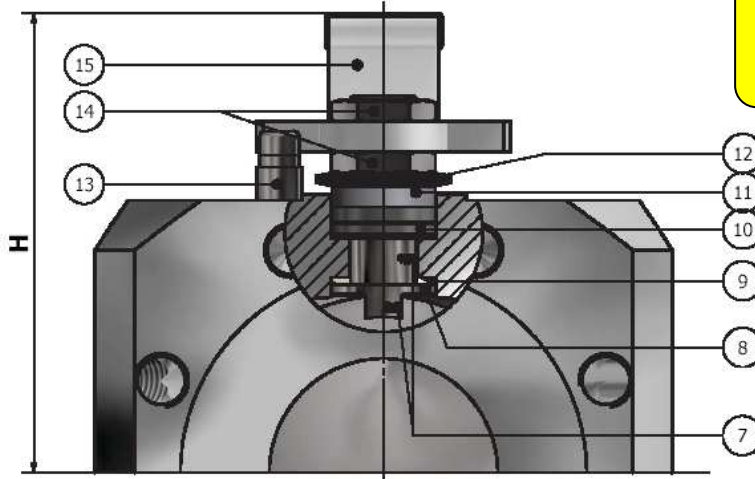
WEB SITE: WWW.ADLERSPA.COM



ISO 9001 by L.R.
 PED DIR. 2014/68/UE by L.R.
 ATEX DIR. 2014/34/UE by B.V.
 FIRE SAFE EXECUTION by L.R.
 ISO 15848 by TÜV
 ANTISTATIC DEVICE by L.R.
 FIRE SAFE TESTED ISO 10497 by L.R.
 EAC CERTIFICATION by B.V

TYPE
FU4
 PN 10 ÷ 40
 ANSI 150

VALVOLA A SFERA "3 VIE CORPO PIATTO" PASSAGGIO TOTALE 120°
BALL VALVES "3 WAY WAFER" FULL BORE 120°
ROBINETS A BOISSEAU SPHERIQUE "3 VOIES WAFER" PASSAGE INTEGRAL 120°
KUGELHÄHNE "3 WEGE KOMPAKTHAHN" VOLLER DURCHGANG 120°

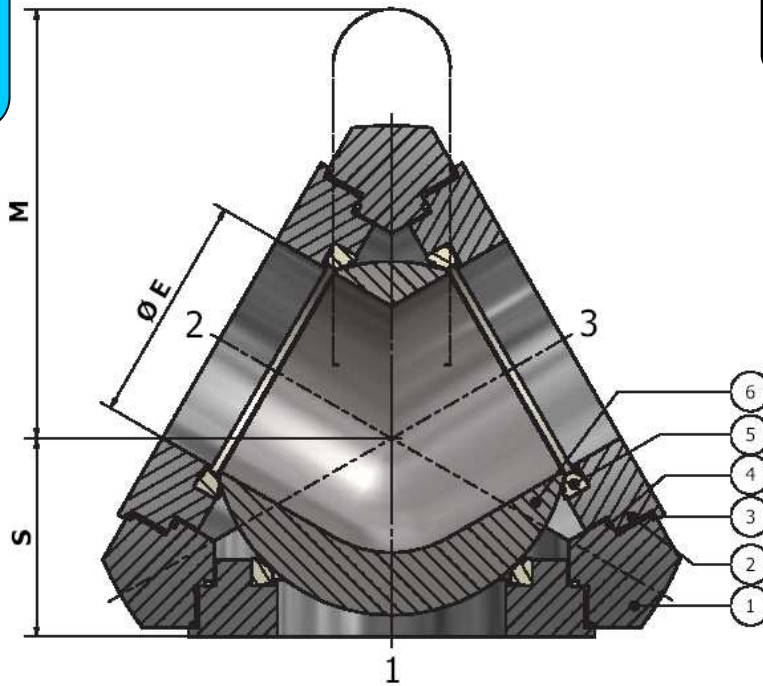


Per montaggio con guarnizioni
 spirametalliche, contattare Adler Spa.
 For assembling with spiral-wound
 gaskets, contact Adler Spa

DN 150 ÷ 200
 -CONSIGLIATO
 RIDUTTORE MANUALE
 -MANUAL GEAR BOX
 SUGGESTED
 -REDUCTEUR MANUEL
 CONSEILLE
 -EMPFEHLEN WIR EIN
 HANDGETRIEBE

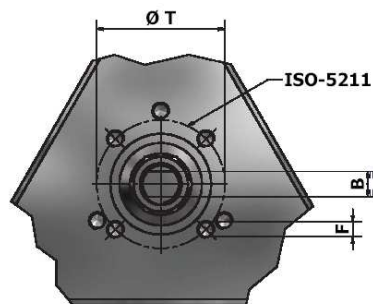
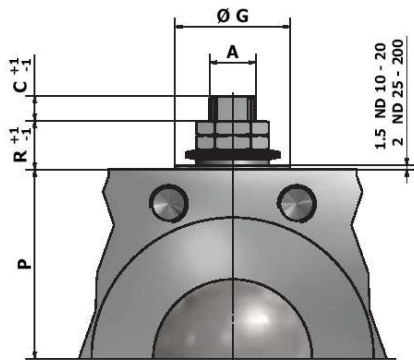
DN 65 PN 16 ESECUZIONE
 STANDARD CON 4 FORI
 SU RICHIESTA DISPONIBILE
 CON 8 FORI
 DN 65 PN 16 STANDARD
 EXECUTION WITH 4 HOLES
 ON REQUEST AVAILABLE WITH
 8 HOLES

BREVETTO - PATENTED
00219616

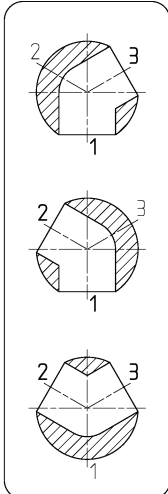


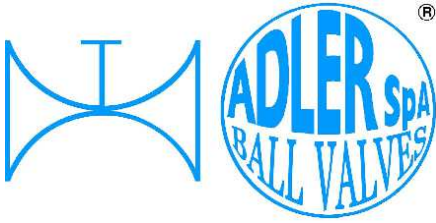
VISUALIZZA 3D
VIEW 3D

<https://adlerspa.com/prodotti/fu4>



POSIZIONI OTTENIBILI
 OBTAINABLE POSITIONS
 POSITIONS OBTENABLES
 MÖGLICHE STELLUNGEN





ISO 9001 by L.R.
 PED DIR. 2014/68/UE by L.R.
 ATEX DIR. 2014/34/UE by B.V.
 FIRE SAFE EXECUTION by L.R.
 ISO 15848 by TÜV
 ANTISTATIC DEVICE by L.R.
 FIRE SAFE TESTED ISO 10497 by L.R.
 EAC CERTIFICATION by B.V

TYPE
FU4
 PN 10 ÷ 40
 ANSI 150

| N. | DESCRIZIONE DESCRIPTION BESCHREIBUNG | MATERIALI MATERIALS MATERIAUX WERKSTOFFE |
|----|--|---|
| 1 | CORPO BODY CORPS MITTE | ASTM A105 ASTM A479 304/304L ASTM A479 316/316L ASTM A351 CF8M |
| 2 | GHIERA INSERT EMBOUT GEWINDEDROCKRING | ASTM A105 ASTM A479 304/304L ASTM A479 316/316L ASTM A351 CF8M |
| 3* | O-RING | FKM - (VITON) |
| 4* | ANELLO SEAL ANNEAU DICHTUNGSRING | P.T.F.E. |
| 5* | SEDE SEAT SIEGE SITZRING | P.T.F.E. R.P.T.F.E. (OPTIONAL) |
| 6 | SFERA BALL BOULE KUGEL | ASTM A479 304/304L ASTM A351 CF8 ASTM A479 316/316L ASTM A351 CF8M |
| 7 | DISPOSITIVO ANTISTATICO ANTISTATIC DEVICE CONTACT ANTISTATIQUE ANTISTATIK VORRICHTUNG | ASTM A479 316/316L |
| 8 | STELO STEM TIGE SPINDEL | ASTM A479 304/304L ASTM A479 316/316L |

| N. | DESCRIZIONE DESCRIPTION BESCHREIBUNG | MATERIALI MATERIALS MATERIAUX WERKSTOFFE |
|-----|--|--|
| 9* | BUSSOLA STEM SEAL JOINT TIGE UNTERE SPINDELABDICHTUNG | P.T.F.E. |
| 10* | PACCO A "V" CHEVRON RINGS JOINT A "V" 3 FACHE DACHMANSCHETTE | P.T.F.E. / GRAFITE P.T.F.E. / GRAPHITE P.T.F.E. / GRAPHITE P.T.F.E. / GRAPHIT |
| 11 | PREMIBUSSOLA PRESSING BUSH PRESSE RONDELLE STOPFBUCHSDRUCKRING | ASTM A479 304 |
| 12 | MOLLE A TAZZA SPRING WASHERS RONDELLES BELLEVILLE TELLERFEDERN | C72/50Cr V4 ZINCATO - GALVANIZED - ZINGUE - VERZINKT X10CrNi18.8 ON REQUEST |
| 13 | VITE DI FERMO E FERMO PIN AND STOP PIN PLOT ET PLOT D'ARRET ANSCHLAGBOLZEN | UNI3740 8.8 ZINCATO - GALVANIZED - ZINGUE - VERZINKT UNI 3951 A2-70 ON REQUEST |
| 14 | DADO - CONTRODADO NUT - LOCK NUT ECROU - CONTRE-ECROU MUTTER - KONTERMUTTER | UNI 3740 - 6S ZINCATO - GALVANIZED ZINGUE - VERZINKT ASTM A479 304 ON REQUEST |
| 15 | LEVA WRENCH LEVIER HANDHEBEL | AISI 1010 CHROMED FOR S.S. VALVES PAINTED FOR C.S. VALVES ASTM A479 304 ON REQUEST |
| 16 | | |

* RICAMBI CONSIGLIATI - RECOMMENDED SPARE PARTS - PIECES DE RECHANGE CONSEILLEES - ERSATZTEIL EMPFEHLUNG

ON REQUEST P.T.F.E. AVAILABLE CERTIFIED BAM, FDA, MOCA

DIMENSIONI - DIMENSION - DIMENSIONS - ABMESSUNGEN

| DN | 10 | 15 | 20 | 25 | 32 | 40 | 50 | 65 | 80 | 100 | 125 | 150 | 200 | 250 | 300 |
|-----|------|------|-----|------|------|------|-----|------|------|------|-----|-----|-----|-----|-----|
| A | 10 | 10 | 10 | 12 | 12 | 16 | 16 | 22 | 22 | 30 | 30 | 42 | 48 | | |
| B | 6 | 6 | 6 | 8 | 8 | 10 | 10 | 14 | 14 | 18 | 18 | 28 | 32 | | |
| C | 8 | 8 | 8 | 10 | 10 | 10 | 10 | 12 | 12 | 17 | 17 | 19 | 20 | | |
| E | 15 | 15 | 19 | 25 | 30 | 38 | 51 | 64 | 76 | 101 | 118 | 152 | 203 | | |
| F | M5 | M5 | M5 | M5 | M5 | M6 | M6 | M8 | M8 | M10 | M10 | M12 | M16 | | |
| ISO | F03 | F03 | F03 | F03 | F03 | F05 | F05 | F07 | F07 | F10 | F10 | F12 | F14 | | |
| G | 25 | 25 | 25 | 25 | 25 | 35 | 35 | 55 | 55 | 70 | 70 | 85 | 100 | | |
| H | 66 | 66 | 66 | 85 | 90 | 109 | 119 | 143 | 152 | 172 | 185 | 253 | 295 | | |
| M | 156 | 156 | 156 | 190 | 190 | 287 | 287 | 374 | 374 | 657 | 657 | 750 | 900 | | |
| P | 32,5 | 32,5 | 35 | 41 | 46,5 | 55 | 65 | 82 | 90,5 | 99,5 | 113 | 144 | 183 | | |
| R | 7 | 7 | 7 | 17 | 17 | 20 | 20 | 23 | 23 | 26 | 26 | 34 | 36 | | |
| S | 33 | 33 | 36 | 39,5 | 45 | 46,5 | 51 | 56,5 | 66 | 77,5 | 91 | 137 | 155 | | |
| T | 36 | 36 | 36 | 36 | 36 | 50 | 50 | 70 | 70 | 102 | 102 | 125 | 140 | | |
| | | | | | | | | | | | | | | | |
| | | | | | | | | | | | | | | | |
| | | | | | | | | | | | | | | | |
| | | | | | | | | | | | | | | | |
| ~Kg | 3,8 | 3,8 | 5 | 5,8 | 9 | 13 | 19 | 27 | 35 | 38 | 41 | 100 | 140 | | |

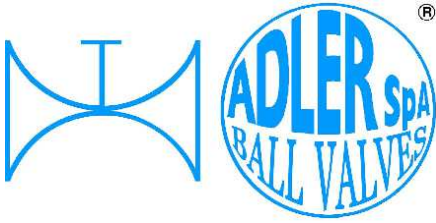
- DATI E CARATTERISTICHE SOGGETTI A VARIAZIONI SENZA PREAVVISO
- SPECIFICATIONS SUBJECT TO MODIFICATIONS WITHOUT PRIOR NOTICE
- TOUS DROITS DE MODIFICATION RESERVES
- KONSTRUKTIONÄNDERUNGEN VORBEHALTEN

PN 10 ÷ 40 - ANSI 150

PN 10 ÷ 16 - ANSI 150



ADLER SpA - BALL VALVES
 20010 S. STEFANO TICINO (MI) ITALY V.le BORLETTI, 14 Tel. +39/02974842.11 FAX +39/0297271698
 E-mail: adler@adlerspa.com <http://www.adlerspa.com>



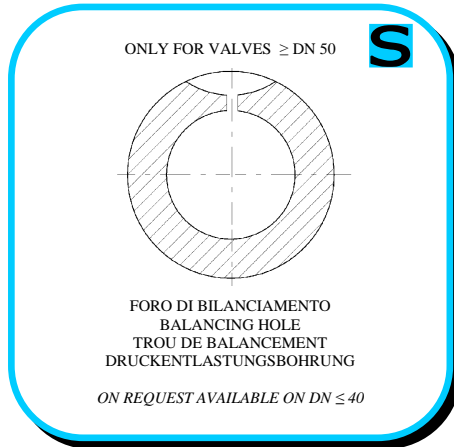
ISO 9001 by L.R.
 PED DIR. 2014/68/UE by L.R.
 ATEX DIR. 2014/34/UE by B.V.
 FIRE SAFE EXECUTION by L.R.
 ISO 15848 by TÜV
 ANTISTATIC DEVICE by L.R.
 FIRE SAFE TESTED ISO 10497 by L.R.
 EAC CERTIFICATION by B.V

TYPE
FU4
 PN 10 ÷ 40
 ANSI 150

• ESECUZIONI • EXECUTIONS • EXECUTIONS • AUSFÜHRUNGEN



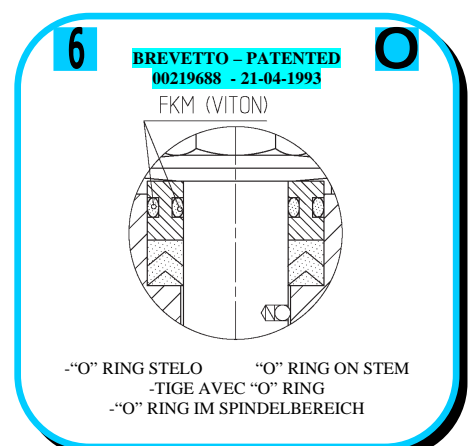
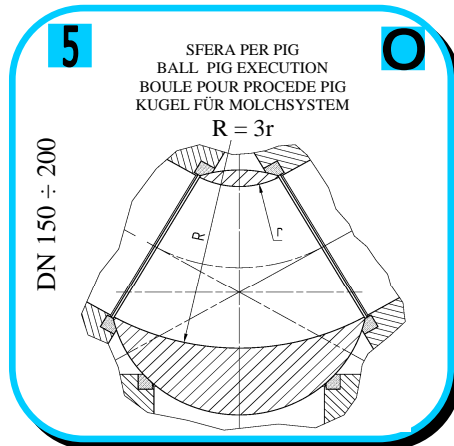
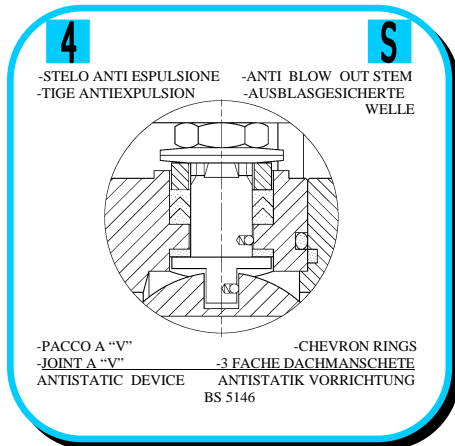
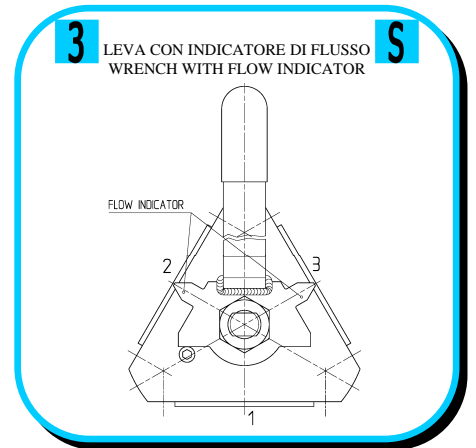
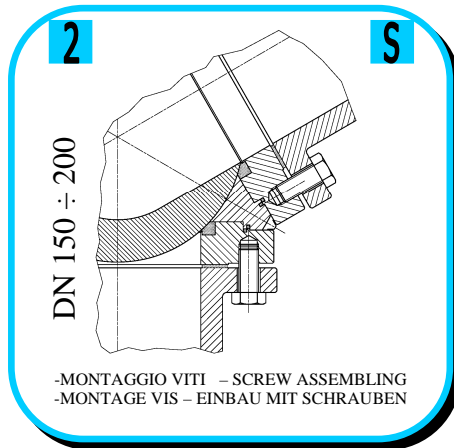
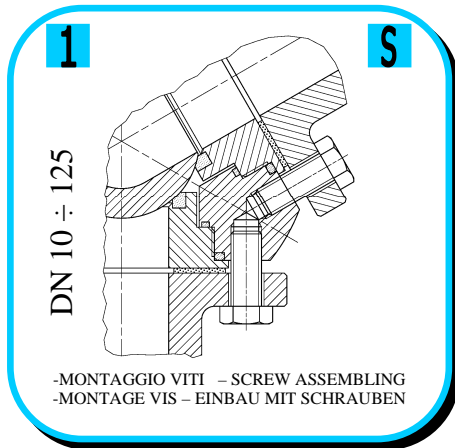
EXECUTION 4- 12

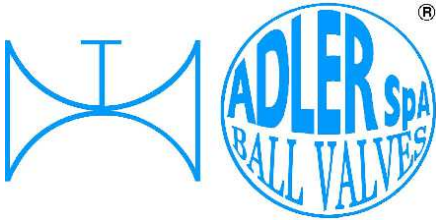


EXECUTION 6 - 16

S STANDARD

O OPTIONAL

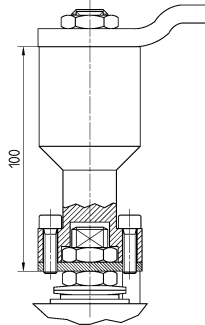




ISO 9001 by L.R.
 PED DIR. 2014/68/UE by L.R.
 ATEX DIR. 2014/34/UE by B.V.
 FIRE SAFE EXECUTION by L.R.
 ISO 15848 by TÜV
 ANTISTATIC DEVICE by L.R.
 FIRE SAFE TESTED ISO 10497 by L.R.
 EAC CERTIFICATION by B.V

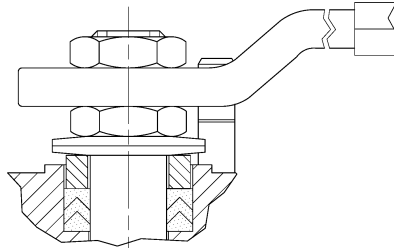
TYPE
FU4
 PN 10 ÷ 40
 ANSI 150

7



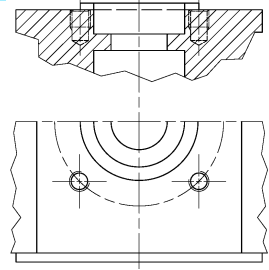
-PROLUNGA STELO -STEM EXTENSION
 -TIGE PROLONGEE -SPINDELVERLÄNGERUNG

8



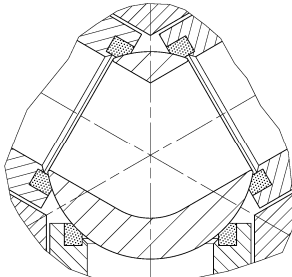
-PARTICOLARI INOX
 -STAINLESS STEEL DETAILS
 -ACCESSOIRES EN INOX
 -EDELSTAHLTEILE

9



-ATTACCO "ISO" -"ISO" CONNECTIONS
 -SYSTEM "ISO" -ANSCHLUSS "ISO"

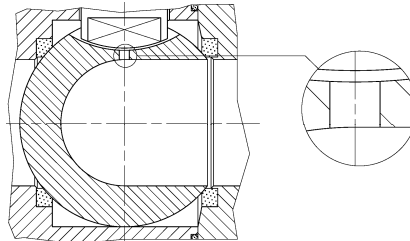
10



-SFERA CONTENUTA -CONTENTS BALL
 -BOULE CONTENUE
 -NICHT RAUSRAGENDE KUGEL

11

VEDERE / SEE ISO 14313



-FORO DI SCARICO NELLA SFERA
 -OVERPRESSURE HOLE INTO BALL
 -TROU DECOMPRESSION DANS LA BOULE
 -ENTLASTUNGSBOHRUNG IN DER KUGEL

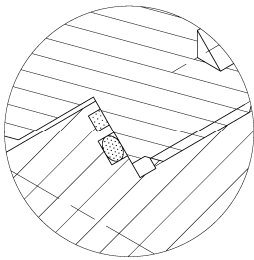
12

FIRE SAFE
 ISO 10497 "ISO-FT"
 (BS 6755 / API 607)



13

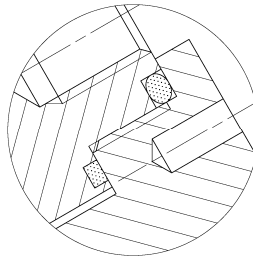
DN 10 ÷ 32



-DOPPIA TENUTA -DOUBLE SEALS
 -DOUBLE ETANCHEITE -DOPPELTE ABDICHTUNG
 -GHIERA A BATTUTA -METAL BEATING RING
 -EMBOUT AVEC BATTUE MECANIQUE
 -METALLISCHER ANSCHLAG DES
 GEWINDEDRUCKRINGS

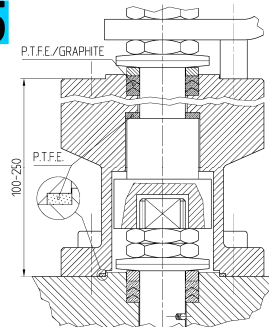
14

DN 40 ÷ 125



-DOPPIA TENUTA -DOUBLE SEALS
 -DOUBLE ETANCHEITE -DOPPELTE ABDICHTUNG
 -GHIERA A BATTUTA -METAL BEATING RING
 -EMBOUT AVEC BATTUE MECANIQUE
 -METALLISCHER ANSCHLAG DES
 GEWINDEDRUCKRINGS

15



-SERVIZIO CRIOGENICO - CRYOGENIC SERVICE
 -SERVICE CRYOGENIQUE
 -TIEFTEMPERATUR SERVICE

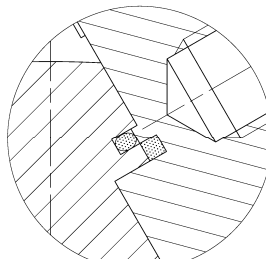
16



-FIRE SAFE ISO FT+ "O" RING STELO
 -FIRE SAFE ISO FT+ "O" RING ON STEM
 -SECURITE FEU ISO FT+ TIGE AVEC "O" RING
 -FEUERSICHERE AUSFÜHRUNG ISO FT +
 "O" RING IM SPINDELBEREICH

17

DN 150-200

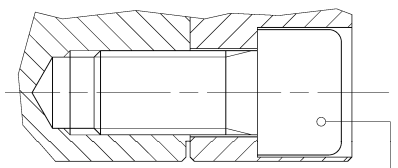


DOPPIA TENUTA - DOUBLE SEALS
 DOUBLE ETANCHEITE
 DOPPELTE ABDICHTUNG

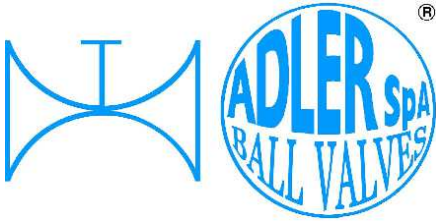
18

DN 150 ÷ 200

UNIONE CORPO LATERALE CON VITE
 BODY AND END ASSEMBLING WITH SCREW



Screw UNI 3740-8.8
 GALVANIZED



ISO 9001 by L.R.
 PED DIR. 2014/68/UE by L.R.
 ATEX DIR. 2014/34/UE by B.V.
 FIRE SAFE EXECUTION by L.R.
 ISO 15848 by TÜV
 ANTISTATIC DEVICE by L.R.
 FIRE SAFE TESTED ISO 10497 by L.R.
 EAC CERTIFICATION by B.V

TYPE
FU4
 PN 10 ÷ 40
 ANSI 150

VITI D'ASSEMBLAGGIO PER FU4 - ASSEMBLING SCREWS FOR FU4 - VIS D'ASSEMBLAGE POUR FU4- MONTAGESCHRAUBEN FÜR FU4
 N° VITI - DIMENSIONE • N° SCREW - DIMENSIONS • N° VIS - DIMENSIONS • N° SCHRAUBEN - ABMESSUNGEN

EUROPEAN NORM

| DN PN | 10-15 | | 20 | | 25 | | 32 | | 40 | | 50 | | 65 | | 80 | | 100 | | 125 | | 150 | | 200 | |
|----------|-------|---------|----|---------|----|---------|----|---------|----|---------|----|---------|----|---------|----|---------|-----|---------|-----|---------|-----|---------|-----|---------|
| 10 | 12 | M12 X30 | 12 | M12 X30 | 12 | M12 X30 | 12 | M16 X35 | 12 | M16 X35 | 12 | M16 X40 | 12 | M16 X40 | | | 24 | M16 X40 | 24 | M16 X45 | 24 | M20 X45 | 24 | M20 X50 |
| 16 | 12 | M12 X30 | 12 | M12 X30 | 12 | M12 X30 | 12 | M16 X35 | 12 | M16 X35 | 12 | M16 X40 | 12 | M16 X40 | 24 | M16 X40 | 24 | M16 X40 | 24 | M16 X45 | 24 | M20 X45 | | |
| 25 | 12 | M12 X30 | 12 | M12 X35 | 12 | M12 X35 | 12 | M16 X40 | 12 | M16 X40 | 12 | M16 X40 | | | 24 | M16 X45 | 24 | M20 X50 | 24 | M24 X55 | | | | |
| 40 | 12 | M12 X30 | 12 | M12 X35 | 12 | M12 X35 | 12 | M16 X40 | 12 | M16 X40 | 12 | M16 X40 | | | 24 | M16 X45 | 24 | M20 X50 | 24 | M24 X55 | | | | |

ANSI METRIC

(STANDARD ADLER)

| Ø Rating | 1/2" | 3/4" | 1" | 1 1/4" | 1 1/2" | 2" | 2 1/2" | 3" | 4" | 5" | 6" | 8" | | | | | | | | | | | | |
|-------------|------|---------|----|---------|--------|---------|--------|---------|----|---------|----|---------|----|---------|----|---------|----|---------|----|---------|----|---------|----|---------|
| 150 | 12 | M14 X30 | 12 | M14 X30 | 12 | M14 X30 | 12 | M14 X35 | 12 | M14 X35 | 12 | M16 X40 | 12 | M16 X40 | 12 | M16 X45 | 24 | M16 X45 | 24 | M20 X50 | 24 | M20 X50 | 24 | M20 X50 |

ANSI B1.1 UNC

(ON REQUEST)

| Ø Rating | 1/2" | 3/4" | 1" | 1 1/4" | 1 1/2" | 2" | 2 1/2" | 3" | 4" | 5" | 6" | 8" | | | | | | | | | | | | |
|-------------|------|-------------|----|-------------|--------|-------------|--------|-------------|----|-------------|----|-------------|----|-------------|----|-------------|----|---------|----|---------|----|---------|----|---------|
| 150 | 12 | 1/2 X 1 1/4 | 12 | 1/2 X 1 1/4 | 12 | 1/2 X 1 1/4 | 12 | 1/2 X 1 1/2 | 12 | 5/8 X 1 1/2 | 12 | 5/8 X 1 3/4 | 12 | 5/8 X 1 3/4 | 24 | 5/8 X 1 3/4 | 24 | 3/4 X 2 | 24 | 3/4 X 2 | 24 | 3/4 X 2 | 24 | 3/4 X 2 |

Length of screws calculated considering a gasket with thickness of 2mm.

