

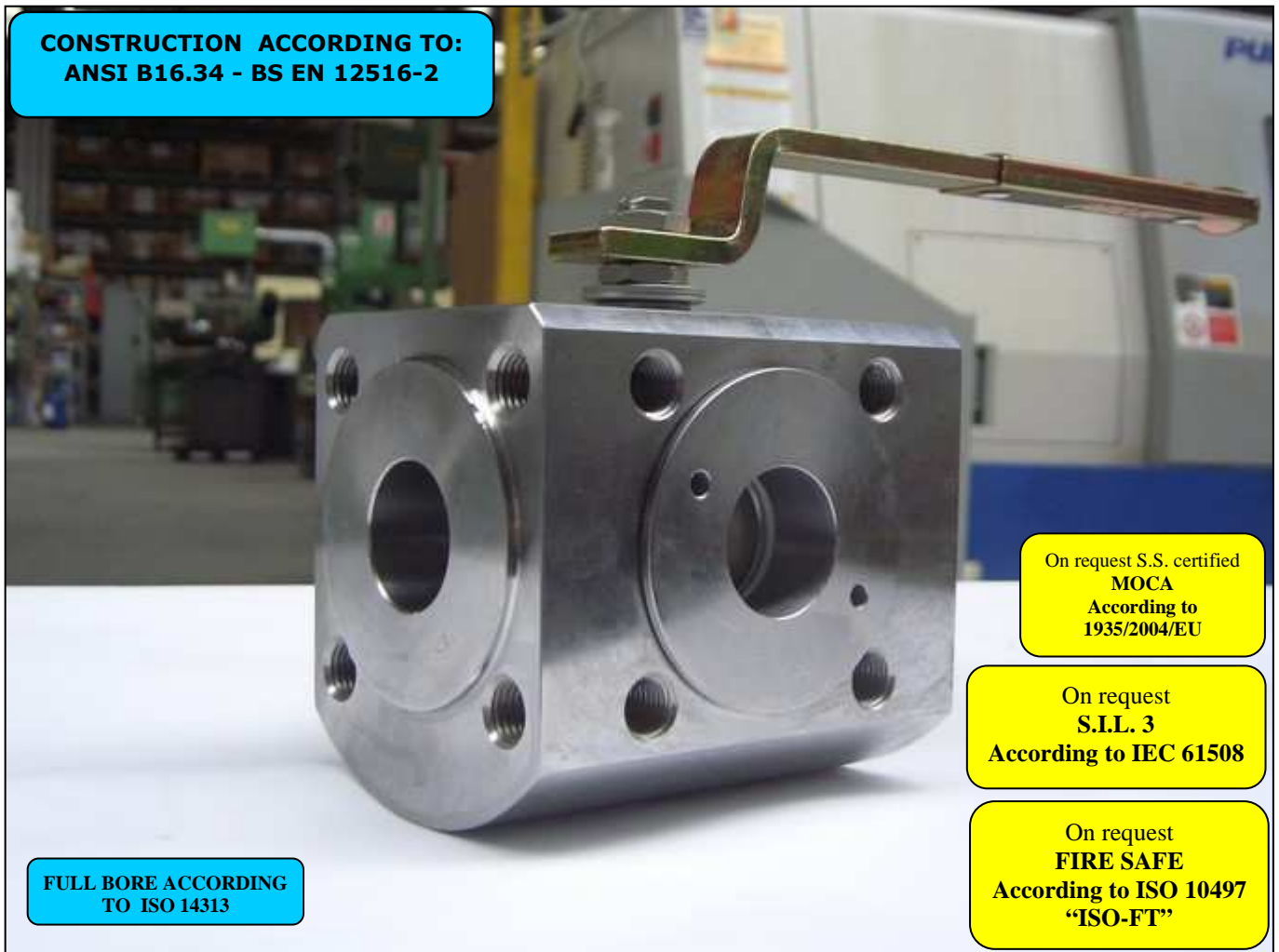
ISO 9001 by L.R.
PED DIR. 2014/68/UE by L.R.
ATEX DIR. 2014/34/UE by B.V.
FIRE SAFE EXECUTION by L.R.
ISO 15848 by TÜV
ANTISTATIC DEVICE by L.R.
FIRE SAFE TESTED ISO 10497 by L.R.
EAC CERTIFICATION by B.V

TYPE
VT5
PN 25 ÷ 63

NORME E DIRETTIVE APPLICATE DISPONIBILI AL SEGUENTE LINK:
STANDARD AND DIRECTIVE APPLIED AVAILABLE AT FOLLOWING LINK:
http://www.adlerspa.com/pdf/NORME_ADLER.pdf

VALVOLE A SFERA "4 VIE" CON SFERA A X

CONSTRUCTION ACCORDING TO:
ANSI B16.34 - BS EN 12516-2



On request S.S. certified
MOCA
According to
1935/2004/EU

On request
S.I.L. 3
According to IEC 61508

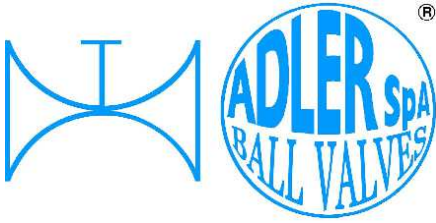
On request
FIRE SAFE
According to ISO 10497
"ISO-FT"

FULL BORE ACCORDING
TO ISO 14313

BALL VALVES "4 WAY" WITH X BALL
ROBINETS A BOISSEAU SPHERIQUE
"4 VOIES" AVEC BOULE A X

KUGELHÄHNE "4 WEGE" MIT X KUGEL

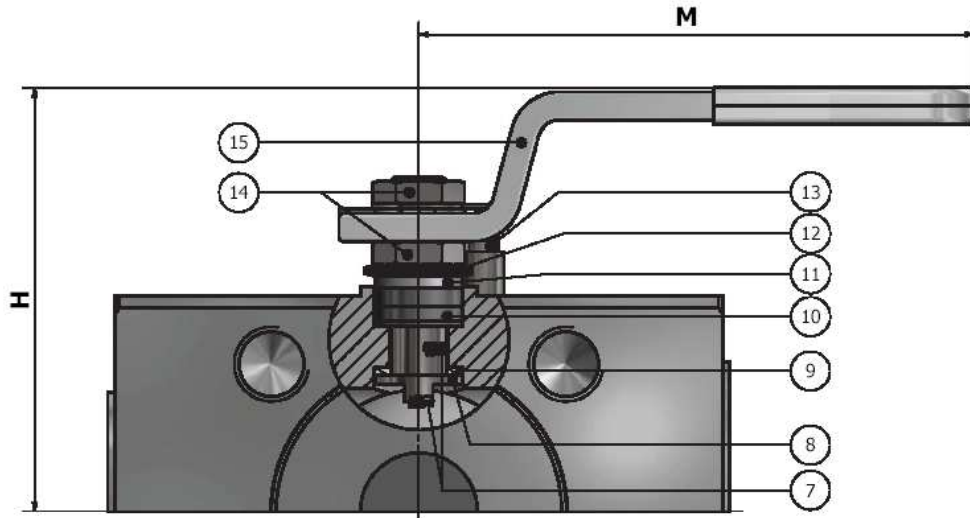
WEB SITE: WWW.ADLERSPA.COM



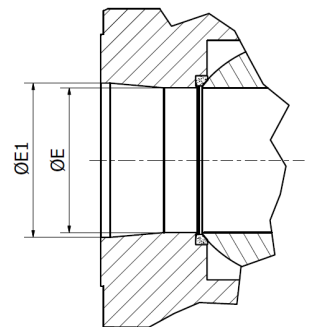
ISO 9001 by L.R.
 PED DIR. 2014/68/UE by L.R.
 ATEX DIR. 2014/34/UE by B.V.
 FIRE SAFE EXECUTION by L.R.
 ISO 15848 by TÜV
 ANTISTATIC DEVICE by L.R.
 FIRE SAFE TESTED ISO 10497 by L.R.
 EAC CERTIFICATION by B.V

TYPE
VT5
 PN 25 ÷ 63

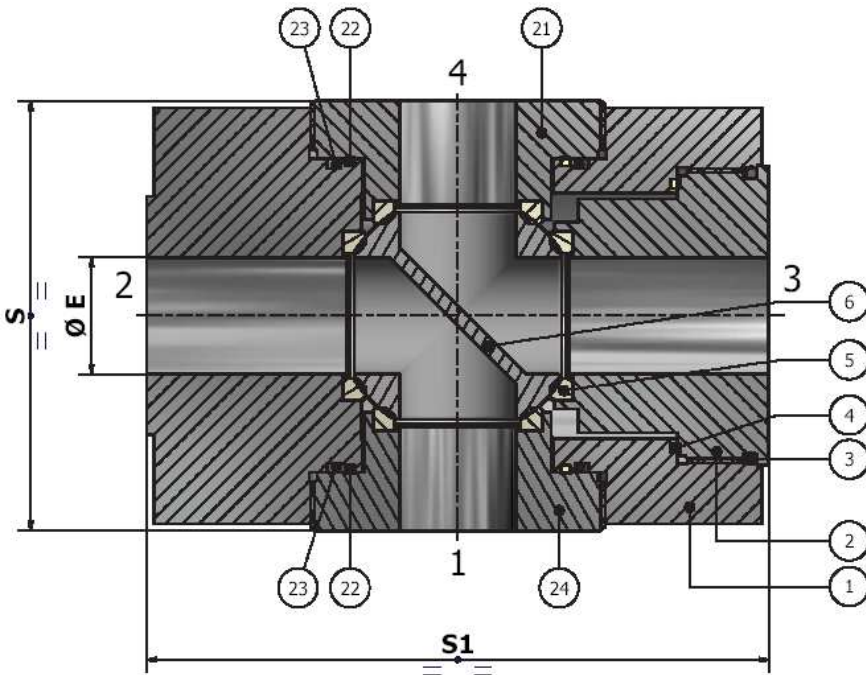
**VALVOLA A SFERA "4 VIE" CON SFERA A X
 BALL VALVES "4 WAY" WITH X-BALL
 ROBINETS A BOULE "4 VOIES" AVEC BOULE A X
 KUGELHÄHNE "4 WEGE" MIT X-KUGEL**



Per montaggio con guarnizioni
 spirametalliche, contattare Adler Spa.
 For assembling with spiral-wound
 gaskets, contact Adler Spa

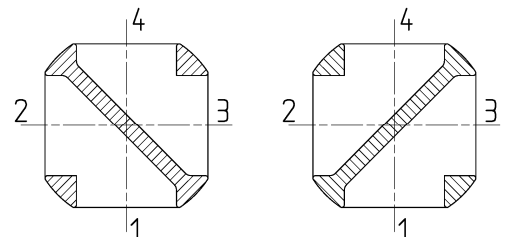
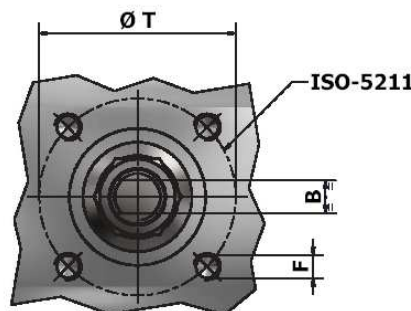
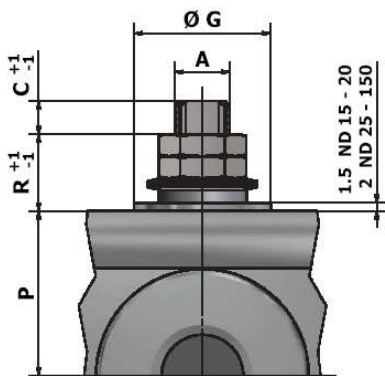


DN 80 ÷ 150

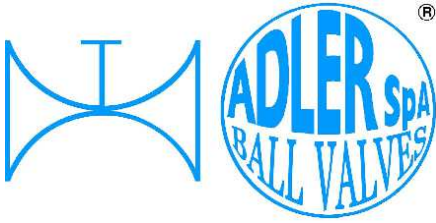


**VISUALIZZA 3D
 VIEW 3D**

<https://adlerspa.com/prodotti/vt5>



POSIZIONI OTTENIBILI
 OBTAINABLE POSITIONS
 POSITIONS OBTENIBLES
 MÖGLICHE STELLUNGEN



ISO 9001 by L.R.
 PED DIR. 2014/68/UE by L.R.
 ATEX DIR. 2014/34/UE by B.V.
 FIRE SAFE EXECUTION by L.R.
 ISO 15848 by TÜV
 ANTISTATIC DEVICE by L.R.
 FIRE SAFE TESTED ISO 10497 by L.R.
 EAC CERTIFICATION by B.V

TYPE
VT5
 PN 25 ÷ 63

N.	DESCRIZIONE DESCRIPTION DESCRIPTION BESCHREIBUNG	MATERIALI MATERIALS MATERIAUX WERKSTOFFE
1	CORPO BODY CORPS MITTE	ASTM A105 ASTM A479 316/316L
2	GHIERA INSERT EMBOUT GEWINDEDRUCKRING	ASTM A105 ASTM A479 316/316L
3*◇	O-RING	FKM (VITON)
4*	ANELLO SEAL ANNEAU DICHTUNGSRING	P.T.F.E.
5*	SEDE SEAT SIEGE SITZRING	P.T.F.E. R.P.T.F.E. (OPTIONAL)
6	SFERA BALL BOULE KUGEL	ASTM A479 304/304L ASTM A351 CF8 ASTM A479 316/316L ASTM A351 CF8M
7	DISPOSITIVO ANTISTATICO ANTISTATIC DEVICE CONTACT ANTISTATIQUE ANTISTATIK VORRICHTUNG	ASTM A479 316/316L
8	STELO STEM TIGE SPINDEL	ASTM A479 304/304L ASTM A479 316/316L
9*	BUSSOLA STEM SEAL JOINT TIGE UNTERE SPINDELABDICHTUNG	P.T.F.E.
10*	PACCO A "V" CHEVRON RINGS JOINT A "V" 3 FACHE DACHMANSCHETTE	P.T.F.E. / GRAFITE P.T.F.E. / GRAPHITE P.T.F.E. / GRAPHITE P.T.F.E. / GRAPHIT

N.	DESCRIZIONE DESCRIPTION DESCRIPTION BESCHREIBUNG	MATERIALI MATERIALS MATERIAUX WERKSTOFFE
11	PREMIBUSSOLA PRESSING BUSH PRESSE RONDELLE STOPFBÜCHSDRUCKRING	ASTM A479 304
12	MOLLE A TAZZA SPRING WASHERS RONDELLES BELLEVILLE TELLERFEDERN	C72/50Cr V4 X10CrNi18.8 ZINCATO - GALVANIZED - ZINGUE - VERZINKT ON REQUEST
13	VITE DI FERMO E FERMO PIN AND STOP PIN PLOT ET PLOT D'ARRET ANSCHLAGBOLZEN	UNI3740 8.8 UNI 3951 A2-70 ZINCATO - GALVANIZED - ZINGUE - VERZINKT ON REQUEST
14	DADO - CONTRODADO NUT - LOCK NUT ECROU - CONTRE-ECROU MUTTER - KONTERMUTTER	UNI 3740 - 6S ASTM A479 304 ZINCATO - GALVANIZED ZINGUE - VERZINKT ON REQUEST
15	LEVA WRENCH LEVIER HANDHEBEL	AISI 1010 ASTM A479 304 CHROMED FOR S.S. VALVES PAINTED FOR C.S. VALVES ON REQUEST
21	GHIERA INSERT EMBOUT GEWINDEDRUCKRING	ASTM A105 ASTM A479 316/316L
22*	ANELLO SEAL ANNEAU DICHTUNGSRING	P.T.F.E.
23*	O-RING	FKM (VITON)
24	GHIERA INSERT EMBOUT GEWINDEDRUCKRING	ASTM A105 ASTM A479 316/316L

* RICAMBI CONSIGLIATI - RECOMMENDED SPARE PARTS - PIECES DE RECHANGE CONSEILLEES - ERSATZTEIL EMPFEHLUNG

ON REQUEST P.T.F.E. AVAILABLE CERTIFIED BAM, FDA, MOCA

DIMENSIONI - DIMENSION - DIMENSIONS - ABMESSUNGEN

DN	10	15	20	25	32	40	50	65	65	80	100	100	125	150	200
A		10	10	12	12	16	16	22	22	22	30	30			
B		6	6	8	8	10	10	14	14	14	18	18			
C		7	7	10	10	15	15	17	17	17	17	17			
ØE		15	19	25	30	38	51	64	64	69	87	87			
ØE1		-	-	-	-	-	-	-	-	76	101	101			
F		M5	M5	M5	M5	M6	M6	M8	M8	M8	M10	M10			
ISO		F03	F03	F03	F03	F05	F05	F07	F07	F07	F10	F10			
G		25	25	25	25	35	35	55	55	55	70	70			
H		70	75	90	95	112	122	147	147	149	174	174			
M		145	145	185	185	280	280	370	370	370	470	470			
P		36,6	41	46	51	57	67	85	85	87	99,5	107			
R		8	8	17	17	20	20	23	23	23	26	18			
S		64	80	83	105	113	124	140	162	174	192	210			
S1		97	108	115	140	150	165	185	206	216	230	262			
T		36	36	36	36	50	50	70	70	70	102	102			
~Kg	CARBON STEEL	4	6,5	7,5	12	15,5	18	25,5	35	54	69	90			
~Kg	STAINLESS STEEL	3,5	5,8	6,5	11	14	16	24							

- DATI E CARATTERISTICHE SOGGETTI A VARIAZIONI SENZA PREAVVISO
- SPECIFICATIONS SUBJECT TO MODIFICATIONS WITHOUT PRIOR NOTICE
- TOUS DROITS DE MODIFICATION RESERVES
- KONSTRUKTIONÄNDERUNGEN VORBEHALTEN

PN 10 ÷ 16 - ANSI 150

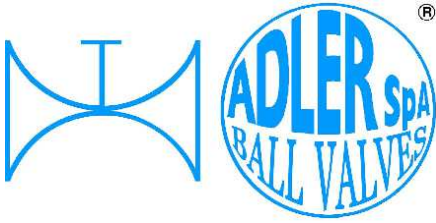
PN 25 ÷ 40

DN 100 ANSI 150 S=100,5 S1=240

PN 10 ÷ 40



ADLER SpA - BALL VALVES
 20010 S. STEFANO TICINO (MI) ITALY V.le BORLETTI, 14 Tel. +39/02974842.11 FAX +39/0297271698
 E-mail: adler@adlerspa.com <http://www.adlerspa.com>



ISO 9001 by L.R.
 PED DIR. 2014/68/UE by L.R.
 ATEX DIR. 2014/34/UE by B.V.
 FIRE SAFE EXECUTION by L.R.
 ISO 15848 by TÜV
 ANTISTATIC DEVICE by L.R.
 FIRE SAFE TESTED ISO 10497 by L.R.
 EAC CERTIFICATION by B.V

TYPE
VT5
 PN 25 ÷ 63

• ESECUZIONI • EXECUTIONS • EXECUTIONS • AUSFÜHRUNGEN



EXECUTION 4- 12



EXECUTION 6 - 16

S STANDARD

O OPTIONAL

1 **S**

-MONTAGGIO VITI – SCREW ASSEMBLING
 -MONTAGE VIS – EINBAU MIT SCHRAUBEN

2 **S** INDICATORE DI FLUSSO
 FLOW INDICATOR

Linked Way

SEE OBTAINABLE POSITIONS
 ON DATASHEET

2 **S** INDICATORE DI FLUSSO
 FLOW INDICATOR
 Linked Way

Linked Way

SEE OBTAINABLE POSITIONS
 ON DATASHEET

4 **S**

-STELO ANTI ESPULSIONE – ANTI BLOW OUT STEM
 -TIGE ANTIEXPULSION – AUSBLASGESICHERTE WELLE

-PACCO A “V” – CHEVRON RINGS
 -JOINT A “V” – 3 FACHE DACHMANSCHETE
 ANTISTATIC DEVICE ANTISTATIK VORRICHTUNG
 BS 5146

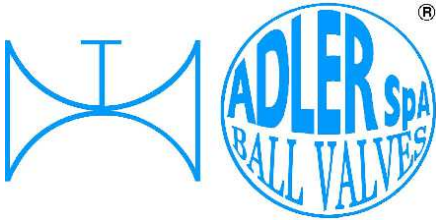
5 **O** DN ¼” ÷ 1 ¼”

103 (DN 10 - 20)
 145 (DN 25 - 32)
 69 (DN 10 - 20)
 79 (DN 25 - 32)
 57

-MANIGLIA OVALE – OVAL HANDLE
 -LEVIER OVAL – HANDHEBEL IN OVALFORM

6 **O** **BREVETTO – PATENTED**
 00219688 - 21-04-1993
 FKM (VITON)

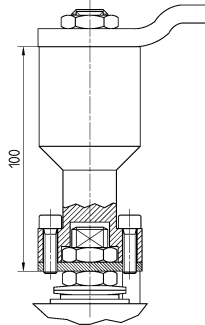
-“O” RING STELO “O” RING ON STEM
 -TIGE AVEC “O” RING
 -“O” RING IM SPINDELBEREICH



ISO 9001 by L.R.
 PED DIR. 2014/68/UE by L.R.
 ATEX DIR. 2014/34/UE by B.V.
 FIRE SAFE EXECUTION by L.R.
 ISO 15848 by TÜV
 ANTISTATIC DEVICE by L.R.
 FIRE SAFE TESTED ISO 10497 by L.R.
 EAC CERTIFICATION by B.V

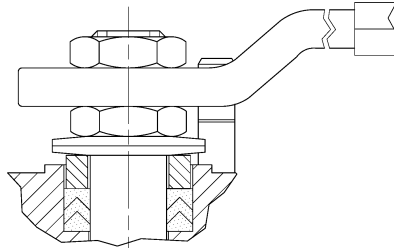
TYPE
VT5
 PN 25 ÷ 63

7



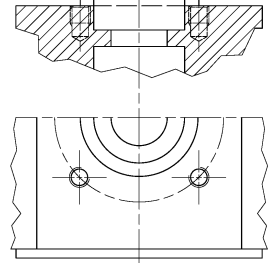
-PROLUNGA STELO -STEM EXTENSION
 -TIGE PROLONGEE -SPINDELVERLÄNGERUNG

8



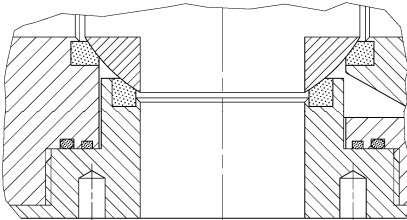
-PARTICOLARI INOX
 -STAINLESS STEEL DETAILS
 -ACCESSOIRES EN INOX
 -EDELSTAHLTEILE

9



-ATTACCO "ISO" -"ISO" CONNECTIONS
 -SYSTEM "ISO" -ANSCHLUSS "ISO"

10



-SFERA CONTENUTA -CONTENTS BALL
 -BOULE CONTENUE
 -NICHT RAUSRAGENDE KUGEL

DIMENSION CHECK

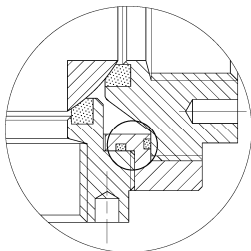


12

FIRE SAFE
 ISO 10497 "ISO-FT"
 (BS 6755 / API 607)



13



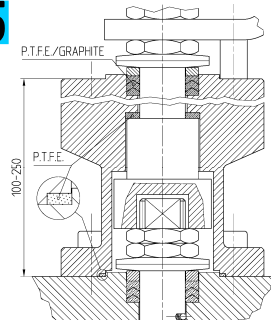
-ANELLO CONTENUTO -CONTAINED SEAL
 -ANNEAU CONTENU -DICHRING GEKAMMERT
 -GHIERA A BATTUTA -METAL BEATING RING
 -EMBOUT AVEC BATTUE MECANIQUE
 -METALLISCHER ANSCHLAG DES
 GEWINDEDRUCKRINGS

ADLER

UNA GAMMA COMPLETA
 PRIVILEGIANDO LA QUALITA'

A COMPLETE RANGE PRIVILEGING
 THE QUALITY

15



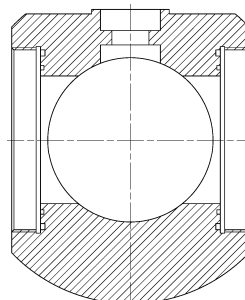
-SERVIZIO CRIOGENICO - CRYOGENIC SERVICE
 -SERVICE CRYOGENIQUE
 -TIEFTEMPERATUR SERVICE

16



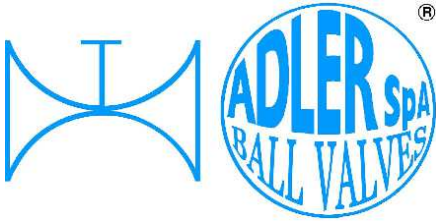
-FIRE SAFE ISO FT+ "O" RING STELO
 -FIRE SAFE ISO FT+ "O" RING ON STEM
 -SECURITE FEU ISO FT+ TIGE AVEC "O" RING
 -FEUERSICHERE AUSFÜHRUNG ISO FT+
 "O" RING IM SPINDELBEREICH

17



C.N.C. TOOLING





ISO 9001 by L.R.
 PED DIR. 2014/68/UE by L.R.
 ATEX DIR. 2014/34/UE by B.V.
 FIRE SAFE EXECUTION by L.R.
 ISO 15848 by TÜV
 ANTISTATIC DEVICE by L.R.
 FIRE SAFE TESTED ISO 10497 by L.R.
 EAC CERTIFICATION by B.V

TYPE
VT5
 PN 25 ÷ 63

EUROPEAN NORM

DN PN	15		20		25		32		40		50		65		80		100		125		150		200		
10	16	M12 X30	16	M12 X30	16	M12 X30	16	M16 X35	16	M16 X35	16	M16 X40	16	M16 X40 (*) 32	M16 X40	32	M16 X40								
16	16	M12 X30	16	M12 X30	16	M12 X30	16	M16 X35	16	M16 X35	16	M16 X40	16	M16 X40	32	M16 X40	32	M16 X40							
25	16	M12 X30	16	M12 X35	16	M12 X35	16	M16 X40	16	M16 X40	16	M16 X40	32	M16 X45	32	M16 X45	32	M20 X50							
40	16	M12 X30	16	M12 X35	16	M12 X35	16	M16 X40	16	M16 X40	16	M16 X40	32	M16 X45	32	M16 X45	32	M20 X50							

* N° 8 per UNI 2223/2229

ANSI METRIC

(STANDARD ADLER)

Ø Rating	1/2"		3/4"		1"		1 1/4"		1 1/2"		2"		2 1/2"		3"		4"		5"		6"		8"		
150	16	M14 X30	16	M14 X30	16	M14 X30	16	M14 X35	16	M14 X35	16	M16 X40	16	M16 X40	16	M16 X45	32	M16 X45							
300	16	M14 X30	16	M16 X35	16	316 X35	16	M16 X40	16	M20 X45	32	M16 X40	32	M20 X50	32	M20 X50	32	M20 X55							

ANSI B1.1 UNC

(ON REQUEST)

Ø Rating	1/2"		3/4"		1"		1 1/4"		1 1/2"		2"		2 1/2"		3"		4"		5"		6"		8"		
150	16	1/2 X 1 1/4	16	1/2 X 1 1/4	16	1/2 X 1 1/4	16	1/2 X 1 1/4	16	1/2 X 1 1/2	16	5/8 X 1 1/2	16	5/8 X 1 3/4	16	5/8 X 1 3/4	32	5/8 X 1 3/4							
300	16	1/2 X 1 1/4	16	5/8 X 1 1/4	16	5/8 X 1 1/2	16	5/8 X 1 1/2	16	3/4 X 1 3/4	16	5/8 X 1 3/4	32	3/4 X 2	32	3/4 X 2	32	3/4 X 2 1/4							

ADLER ASSEMBLING

