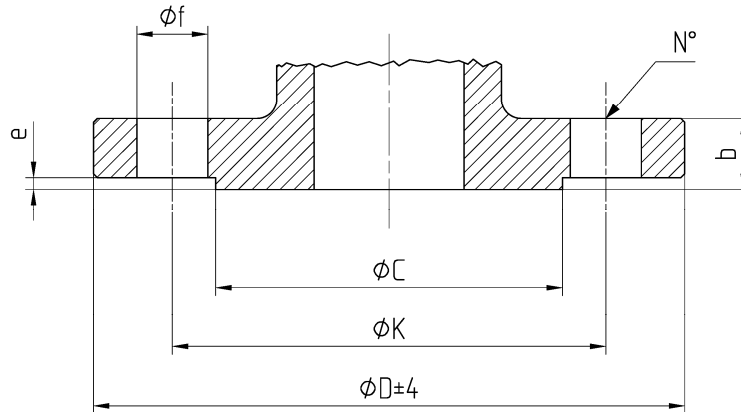




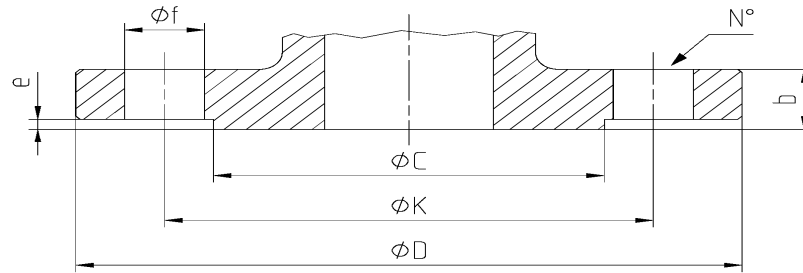
DIMENSIONI FLANGE UNI EN 1092-1
FLANGE DIMENSION UNI EN 1092-1
DIMENSIONS BRIDES UNI EN 1092-1
FLANSCHANSCHLßMAßE UNI EN 1092-1

TABLE
03



DN	Ref.	10	15	20	25	32	40	50	65	80	100	125	150	200	250	300	
PN 10	D	90	95	105	115	140	150	165	185	200	220	250	285	340	395	445	
	C	40	45	58	68	78	88	102	122	138	158	188	212	268	320	370	
	K	60	65	75	85	100	110	125	145	160	180	210	240	295	350	400	
	N°	4	4	4	4	4	4	4	4	4	8	8	8	8	8	12	12
	f	14	14	14	14	14	18	18	18	18	18	18	18	22	22	22	22
	b	14	14	16	16	16	16	16	18	18	20	20	22	22	24	26	26
	e	2	2	2	2	2	2	3	3	3	3	3	3	3	3	3	4
PN 16	D	90	95	105	115	140	150	165	185	200	220	250	285	340	405	460	
	C	40	45	58	68	78	88	102	122	138	158	188	212	268	320	378	
	K	60	65	75	85	100	110	125	145	160	180	210	240	295	355	410	
	N°	4	4	4	4	4	4	4	4	4*	8	8	8	8	12	12	12
	F	14	14	14	14	14	18	18	18	18	18	18	18	22	22	26	26
	b	14	14	16	16	16	16	16	18	18	20	20	22	22	24	26	28
	e	2	2	2	2	2	2	3	3	3	3	3	3	3	3	3	4
PN 25	D	90	95	105	115	140	150	165	185	200	235	270	300	360	425	485	
	C	40	45	58	68	78	88	102	122	138	162	188	218	278	335	395	
	K	60	65	75	85	100	110	125	145	160	190	220	250	310	370	430	
	N°	4	4	4	4	4	4	4	4	8	8	8	8	12	12	16	
	f	14	14	14	14	14	18	18	18	18	18	22	26	26	26	30	30
	b	16	16	18	18	18	18	18	20	22	24	24	26	28	30	32	34
	e	2	2	2	2	2	2	3	3	3	3	3	3	3	3	3	4
PN 40	D	90	95	105	115	140	150	165	185	200	235	270	300	375	450	515	
	C	40	45	58	68	78	88	102	122	138	162	188	218	285	345	410	
	K	60	65	75	85	100	110	125	145	160	190	220	250	320	385	450	
	N°	4	4	4	4	4	4	4	4	8	8	8	8	12	12	16	
	f	14	14	14	14	14	18	18	18	18	18	22	26	26	30	33	33
	b	16	16	18	18	18	18	18	20	22	24	24	26	28	34	38	42
	e	2	2	2	2	2	2	3	3	3	3	3	3	3	3	3	4
PN 63	D	100	105	130	140	155	170	180	205	215	250	295	345	415	470	530	
	C	40	45	58	68	75	88	102	122	138	162	188	218	285	345	410	
	K	70	75	90	100	110	125	135	160	170	200	240	280	345	400	460	
	N°	4	4	4	4	4	4	4	4	8	8	8	8	12	12	16	
	f	14	14	18	18	22	22	22	22	22	26	30	33	36	36	36	
	b	20	20	22	24	24	26	26	26	28	30	34	36	42	46	52	
	e	2	2	2	2	2	2	3	3	3	3	3	3	3	3	4	
PN 100	D	100	105	130	140	155	170	195	220	230	265	315	355	430	505	585	
	C	40	45	58	68	75	88	102	122	138	162	188	218	285	345	410	
	K	70	75	90	100	110	125	145	170	180	210	250	290	360	430	500	
	N°	4	4	4	4	4	4	4	4	8	8	8	8	12	12	16	
	f	14	14	18	18	22	22	26	26	26	30	33	33	36	39	42	
	b	20	20	22	24	24	26	28	30	32	36	40	44	52	60	68	
	e	2	2	2	2	2	2	3	3	3	3	3	3	3	3	4	
PN 160	D	100	105	130	140	155	170	195	220	230	265	315	355	430	515	585	
	C	40	45	58	68	75	88	102	122	138	162	188	218	285	345	410	
	K	70	75	90	100	110	125	145	170	180	210	250	290	360	430	500	
	N°	4	4	4	4	4	4	4	4	8	8	8	8	12	12	16	
	f	14	14	18	18	22	22	26	26	26	30	33	33	36	42	42	
	b	20	20	22	24	26	28	30	34	36	40	44	50	60	68	78	
	e	2	2	2	2	2	2	3	3	3	3	3	3	3	3	4	

* N° 8 fori su richiesta



DN	Ref.	1/2"	3/4"	1"	1 1/4"	1 1/2"	2"	2 1/2"	3"	4"	5"	6"	8"	10"	12"	
ANSI 150 RF	D	88.9	98.6	108	117.4	127	152.4	177.8	190.5	228.6	254	279.4	342.9	406.4	482.6	
	C	35.1	43	50.8	63.5	73	92	104.8	127	157.2	185.7	215.9	269.8	323.9	381	
	K	6035	69.9	79.2	88.9	98.6	120.7	139.7	152.4	190.5	215.9	241.3	298.5	362	431.8	
	N°	4	4	4	4	4	4	4	4	8	8	8	8	12	12	
	f	15.8	15.8	15.8	15.8	19.1	19.1	19.1	19.1	19.1	22.4	22.4	22.4	22.4	25.4	25.4
	b	11.2	12.7	14.3	15.8	17.6	19.1	22.4	23.9	23.9	23.9	23.9	25.4	28.5	30.3	31.8
	e	1.6	1.6	1.6	1.6	1.6	1.6	1.6	1.6	1.6	1.6	1.6	1.6	1.6	1.6	1.6
ANSI 300 RF	D	95.3	117.4	124	133.4	155.5	165.1	190.5	209.6	254	279.4	317.5	381	444.5	520.7	
	C	35.1	43	50.8	63.5	73.2	92	104.7	127	157.3	185.7	215.9	269.8	323.9	381	
	K	66.5	82.6	88.9	98.6	114.3	127	149.4	168.1	200.2	134.9	269.7	330.2	387.4	450.9	
	N°	4	4	4	4	4	8	8	8	8	8	12	12	16	16	
	f	15.8	19.1	19.1	19.1	22.4	19.1	22.4	22.4	22.4	22.4	22.4	22.4	25.4	28.5	31.8
	b	14.3	15.8	17.6	19.1	20.6	22.4	25.4	28.5	31.8	35.1	36.6	41.2	47.8	50.8	
	e	1.6	1.6	1.6	1.6	1.6	1.6	1.6	1.6	1.6	1.6	1.6	1.6	1.6	1.6	1.6
ANSI 400 RF	D	95.3	117.4	124	133.4	155.5	165.1	190.5	209.6	254	279.4	317.5	381	444.5	520.7	
	C	35.1	43	50.8	63.5	73.2	92	104.7	127	157.3	185.7	215.9	269.8	323.9	381	
	K	66.5	82.6	88.9	98.6	114.3	127	149.4	168.1	200.2	234.9	269.7	330.2	387.4	450.9	
	N°	4	4	4	4	4	8	8	8	8	8	12	12	16	16	
	f	15.8	19.1	19.1	19.1	22.4	19.2	22.4	22.4	22.4	25.4	25.4	25.4	28.5	31.8	35.1
	b	20.7	22.2	27	27	28.8	31.8	34.9	38.2	41.5	44.5	47.6	54.2	60.3	63.6	
	e	6.4	6.4	6.4	6.4	6.4	6.4	6.4	6.4	6.4	6.4	6.4	6.4	6.4	6.4	6.4
ANSI 600 RF	D	95.3	117.4	133.4	133.4	155.5	165.1	190.5	209.6	273.1	330.2	355.6	419.1	508	558.8	
	C	35.1	43	63.5	63.5	73.2	92	104.7	127	157.3	185.7	215.9	269.8	323.9	381	
	K	66.5	82.6	98.6	98.6	114.3	127	149.4	168.1	215.9	266.7	292.1	349.3	431.8	489	
	N°	4	4	4	4	4	8	8	8	8	8	12	12	16	20	
	f	15.8	19.1	19.1	19.1	22.4	19.1	22.4	22.4	25.4	28.5	28.5	31.8	35.1	35.1	
	b	20.7	22.2	27	27	28.8	31.8	34.9	38.2	44.5	50.9	54.2	62.1	69.9	73	
	e	6.4	6.4	6.4	6.4	6.4	6.4	6.4	6.4	6.4	6.4	6.4	6.4	6.4	6.4	6.4
ANSI 900 RF	D	120.7	130.1	158.8	158.8	177.8	215.9	244.4	241.3	292.1	349.3	381	469.9	546.1	609.6	
	C	35.1	43	63.5	63.5	73.2	92	104.7	127	157.3	185.7	215.9	269.8	323.9	381	
	K	82.6	88.9	111.3	111.3	124	165.1	190.5	190.5	235	279.4	317.5	396.7	469.9	533.4	
	N°	4	4	4	4	4	8	8	8	8	8	12	12	16	20	
	f	22.4	22.4	25.4	25.4	28.5	25.4	28.5	25.4	31.8	35.1	31.8	38.1	38.1	38.1	
	b	28.8	31.8	34.9	34.9	38.2	44.5	47.6	44.5	50.9	57.2	62.1	69.9	76.3	85.7	
	e	6.4	6.4	6.4	6.4	6.4	6.4	6.4	6.4	6.4	6.4	6.4	6.4	6.4	6.4	6.4
ANSI 1500 RF	D	120.7	130.1	158.8	158.8	177.8	215.9	244.4	266.7	311.2	374.7	393.7	482.6	584.2	673.1	
	C	35.1	43	63.5	63.5	73.2	92	104.7	127	157.3	185.7	215.9	269.8	323.9	381	
	K	82.6	88.9	111.3	111.3	124	165.1	190.5	203.2	241.3	292.1	317.5	393.7	482.6	571.5	
	N°	4	4	4	4	4	8	8	8	8	8	12	12	12	16	
	f	22.4	22.4	25.4	25.4	28.5	25.4	28.5	31.8	35.1	41.2	38.1	44.5	50.8	53.9	
	b	28.8	31.8	34.9	34.9	38.2	44.5	47.6	54.2	60.3	79.6	89	98.4	114.4	130.4	
	e	6.4	6.4	6.4	6.4	6.4	6.4	6.4	6.4	6.4	6.4	6.4	6.4	6.4	6.4	6.4
ANSI 2500 RF	D	133.4	139.7	184.2	184.2	203.2	235	266.7	304.8	355.6	419.1	482.6	552.5	673.1	762	
	C	35.1	43	63.5	63.5	73.2	92	104.7	127	157.3	185.7	215.9	269.8	323.9	381	
	K	88.9	95.3	130	130	146	171.5	196.9	228.6	273	323.9	368.3	438.2	539.8	619.3	
	N°	4	4	4	4	4	8	8	8	8	8	8	12	12	12	
	f	22.4	22.4	28.5	28.5	31.8	28.5	31.8	35.1	41.2	47.8	53.9	53.9	66.6	73.2	
	b	36.7	38.2	44.5	44.5	50.9	57.2	63.6	73	82.6	98.4	114.4	133.4	171.5	190.6	
	e	6.4	6.4	6.4	6.4	6.4	6.4	6.4	6.4	6.4	6.4	6.4	6.4	6.4	6.4	6.4